



**MANAGED FORESTS ARE FOREVER**



[HEALTHYFORESTS.ORG](http://HEALTHYFORESTS.ORG)

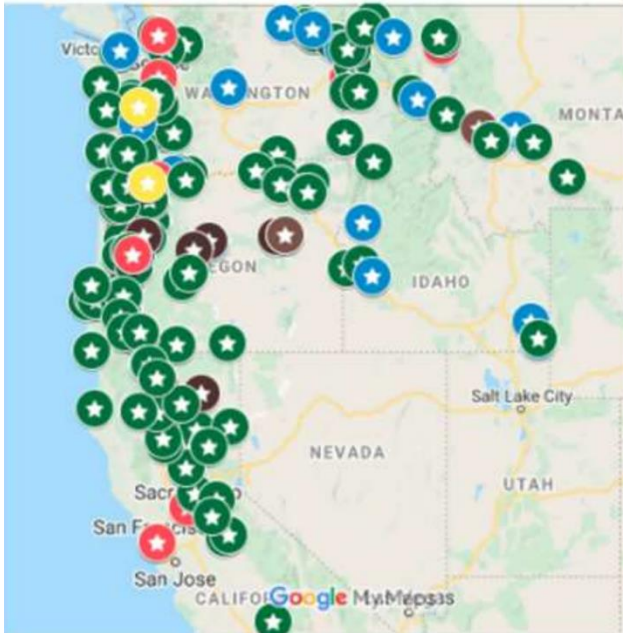


***Ways to Engage  
Mapping the Course- 2026***



**AFRC is a regional trade association whose purpose is to advocate for sustained yield timber harvests on public timberlands throughout the West to enhance forest health and resistance to fire, insects, and disease.**

- Offices in Portland, Eugene, Olympia.
- CA, OR, WA, ID, MT
- Purchasers of public timber – mills, logging contractors and state agencies.
- Focus on US Forest Service, BLM and Washington DNR
- Programs
  - **Legal- two attorneys on staff.**
  - Monitoring- field foresters and consultants
  - Government and Public Affairs (communications).



***AmForest.ORG***

# Healthy Forests



# Healthy Communities

**Established in 2013, Healthy Forests, Healthy Communities (HFHC) is a non-profit, non-partisan grassroots organization that advocates for federal forest reforms, or those that:**

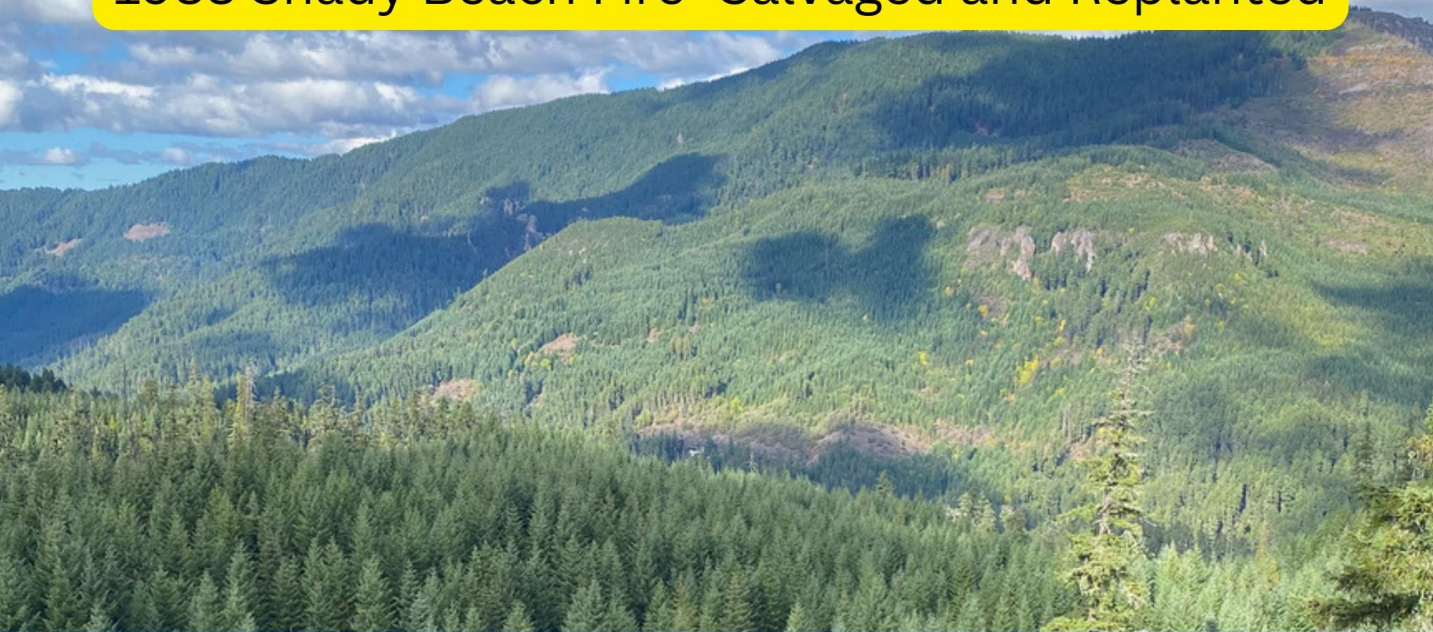
- Promote active, multiple-use management of federal forest lands.
- Create jobs and economic opportunities in rural, forested communities.
- Provide stable revenues for rural county governments and other essential services.

**Program activities:**

- ✓ Coalition of local elected officials, business, labor, law enforcement, educators, others.
- ✓ Grassroots network of over 300,000 people supporting better management of federal forests.
- ✓ Frequent contributor to print and broadcast media on forestry issues.

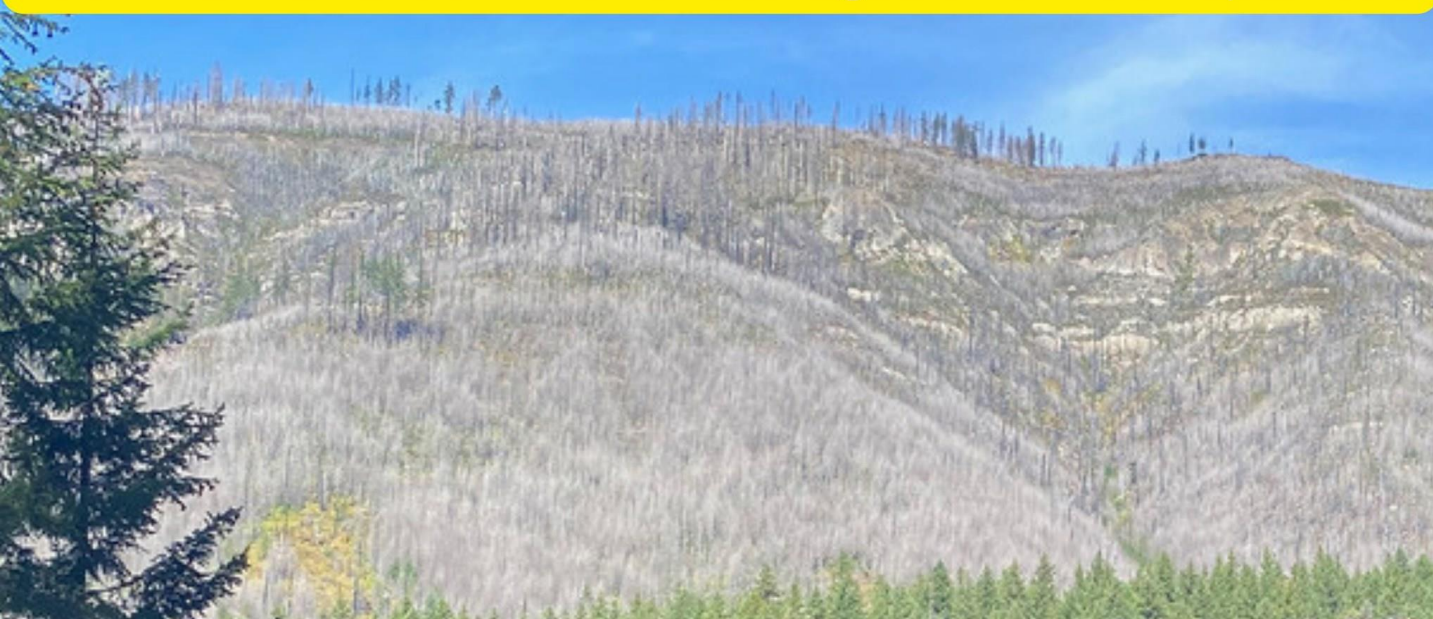
***HealthyForests.ORG***

1988 Shady Beach Fire- Salvaged and Replanted



**Forest  
Management  
is a Choice.**

1991 Warner Creek Fire- Unsalvaged and Not Replanted



**We can  
choose to take  
action, or not.**

 **Insights**

Last 7 Days

**Performance**

**6,383,983**

People Reached

▲ 1067%

**62,441**

Engagement

▲ 98%

**1,660**

Link Clicks

▲ 68.7%

**5,280**

Comments

▲ 65%

**est. Manage. Reforest.**

 Edit

hy

Nonprofit

 Edit Sign Up

 Promote







## **Momentum for Active Forest Management on Federal Lands**

- **President's Executive Order on Domestic Timber and Lumber Production**
- **OBBB: 25% annual increase in NFS timber volume is LAW.**
- **DOI: Revisions to Western Oregon BLM (O&C) timber lands RMPs to significantly increase timber volumes.**
- **NEPA and ESA: Reforms to facilitate more active management**
- **US Supreme Court: NEPA is a “procedural cross-check, not a substantive roadblock”**
- **Hard Look at Roadless Rule**
- **New Nationwide Post Fire EA to expedite post-fire salvage**

# USFS TIMBER TARGETS FY2026

## USFS R6 - FY26

Target - 622 MMBF

Forest	Target (MMBF)	Sold	% Accomplishment
Colville	131.0	60.6	46%
Deschutes	24.0	17.5	73%
Fremont-Winema	100.0	63.8	64%
<b>Gifford Pinchot</b>	<b>36.0</b>	<b>18.5</b>	<b>51%</b>
Malheur	35.0	6.9	20%
<b>Mt Baker-Snoqualmie</b>	<b>10.0</b>	<b>0.2</b>	<b>2%</b>
Mt Hood	26.0	23.9	92%
Ochoco	10.0	5.7	57%
Okanogan-Wenatchee	30.0	9.0	30%
<b>Olympic</b>	<b>10.0</b>	<b>2.1</b>	<b>21%</b>
Rogue River-Siskiyou	25.0	20.1	80%
Siuslaw	40.0	22.3	56%
Umatilla	35.0	15.0	43%
Umpqua	30.0	9.7	32%
Wallowa Whitman	20.0	9.4	47%
Willamette	60.0	14.1	24%
<b>Total</b>	<b>622.0</b>	<b>298.8</b>	<b>48%</b>

## Region 6 Past and Outyear Projections

Forest	FY25	FY26	FY27	FY28
Deschutes	26	24	28	35
Fremont Winema	104	100	100	95
<b>Gifford Pinchot</b>	<b>23</b>	<b>36</b>	<b>45</b>	<b>65</b>
Malheur	19	35	55	55
<b>Mt Baker-Snoqualmie</b>	<b>14</b>	<b>10</b>	<b>15</b>	<b>20</b>
Mt Hood	11	26	29	30
Ochoco	15	10	13	17
<b>Olympic</b>	<b>17</b>	<b>10</b>	<b>22</b>	<b>28</b>
Rogue River Siskiyou	32	25	32	45
Siuslaw	47	40	50	60
Umatilla	38	35	44	57
Umpqua	30	30	40	45
Wallowa Whitman	19	20	28	35
Okanogan Wenatchee	19	30	41	50
Willamette	77	60	70	127
Colville	119	131	133	136
<b>Total</b>	<b>610</b>	<b>622</b>	<b>745</b>	<b>900</b>

# ***Why Engage?***



**Misinformation contributes to BAD FOREST POLICY**

**Public opinion is important. But perceptions (and policies) are defined by the VOICES “in the room” where decisions are made.**

# Effective engagement starts with **BEING INFORMED.**

## The AFRC Podcast



*Episode 56: Chief Schultz Takes Us Inside the Forest Service Reorganization*

The AFRC Podcast



**HFHC: HEALTHYFORESTS.ORG**  
**AFRC: AMFOREST.ORG**



### Washington, DC Update

*Bipartisan Infrastructure Deal.* On November 6, the U.S. House passed the \$1.2 trillion Bipartisan Infrastructure Investment and Jobs Act by a vote of 221-213 and sent the bill to President Biden, who signed it into law on November 15. The legislation represents a historic five-year investment in physical infrastructure priorities, including roads, bridges, rail, public transit, broadband, and power grid modernization. The legislation also directs about \$6 billion to the US Forest Service and Department of the Interior for wildfire risk reduction and ecosystem restoration activities focused primarily on federal lands, as well as modest new legal authorities to streamline forest management. A [detailed summary](#) of the Infrastructure bill and a [summary of the forestry](#)

### The AFRC Podcast



Episode 3 Guest: Sara Ghafouri  
AFRC General Counsel

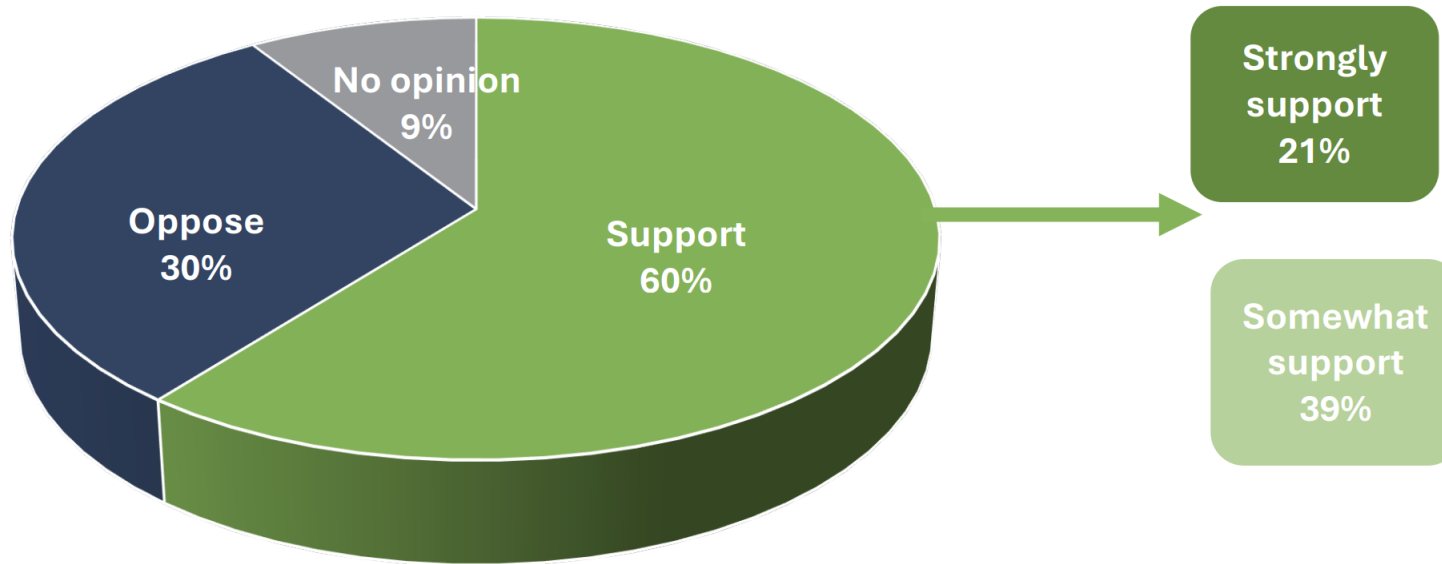
The AFRC Podcast



***It also means UNDERSTANDING PUBLIC OPINION***

# LOGGING IS WIDELY SUPPORTED

“Thinking about timber harvest and logging activities in Washington State, In general, do you strongly support logging in Washington State, somewhat support, somewhat oppose or strongly oppose logging in Washington State?” (Q13)



- Support increases with age (53% support age 18-44, 73% support among age 65+).
- Gender gap – Men are significantly more likely to support logging than women (69% vs 52%).
- Republicans are more likely to approve (75%) than Democrats (51%) or Independents (61%).
- Long-term residents are more likely to support logging (66%) than newer residents (55%).









PROTECT  
WHAT'S  
LEFT

LET THE  
FOREST  
HEAL

NOT ONE  
BLACK  
STICK!

WORTH  
MORE  
THAN  
STANDING

I'm Not  
Dead  
Yet!

FIRE  
REPUBLICAN  
CLEAN  
DEVELOPMENT

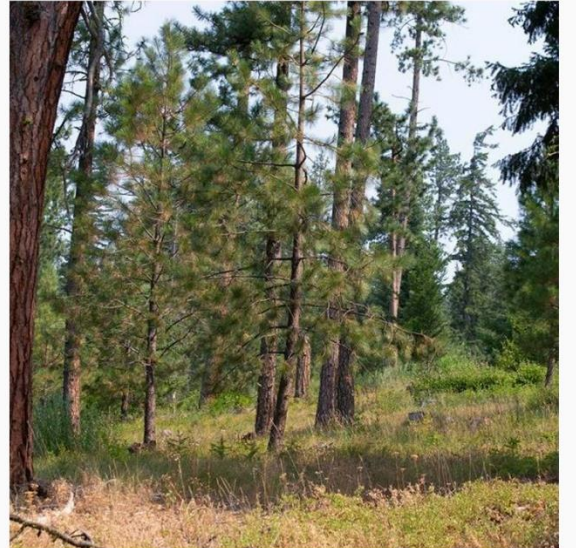


**What's in it for me?**



Managed forest

Unmanaged forest





# Answer the Call! Respond to action alerts





## Action Alert: Improve the Health of Eastern Oregon's Rural Communities and Federal Forests



It's time for a permanent and comprehensive solution that improves the health of Eastern Oregon's rural communities and federal forests.

Eastern Oregon's forests are overly dense, unhealthy and highly vulnerable to devastating crown fires due to a lack of active forest management. Meanwhile, food stamp use and welfare payments have tripled in nearby areas due to a lack of employment in our rural, forested communities. Today, nearly one in five people in these communities live in poverty.

In a June 25, 2013 committee hearing, Oregon Senator Ron Wyden acknowledged that forest management efforts are hindered ([click here for video](#)) by a lack of funding to prepare timber sales; environmental analysis and review times associated with management activities; and litigation that stalls work that needs to be done.



Senator Wyden also committed to addressing the costs, delays and litigation ([click here for video](#)) that is being driven by one well-meaning, but frequently abused environmental law, the National Environmental Policy Act (NEPA).

***Answer the call to Action...***

## Compose Your Message

- President
- US Senators
- US Representative

### Subject

Keep the Olympic Peninsula working

### Message Body

Please add your own story about this issue to personalize your message

We deserve better than the "Wild Olympics Wilderness and Wild and Scenic Rivers Act." Our communities need jobs, our forests need active management and thinning, and our local governments need revenue to fund public services. Adding another 125,000 acres of federal wilderness and new land set-asides does not provide our communities with any of these benefits.

## Enter Your Info

### Your Information

Prefix \*

First Name \*

Last Name \*

Email \*

### Home Information

Street Address \*

ZIP Code \*

Enter Zip for **City** and **State**

Send me email alerts

Remember me

**Send Message**



**Invite policymakers, media out into the woods.**



