

Strategic Issues in the Pacific Northwest

Mapping the Course
Bend Oregon
May 12, 2026



Archie Gray CF
Chief, Forestry Assistance Bureau

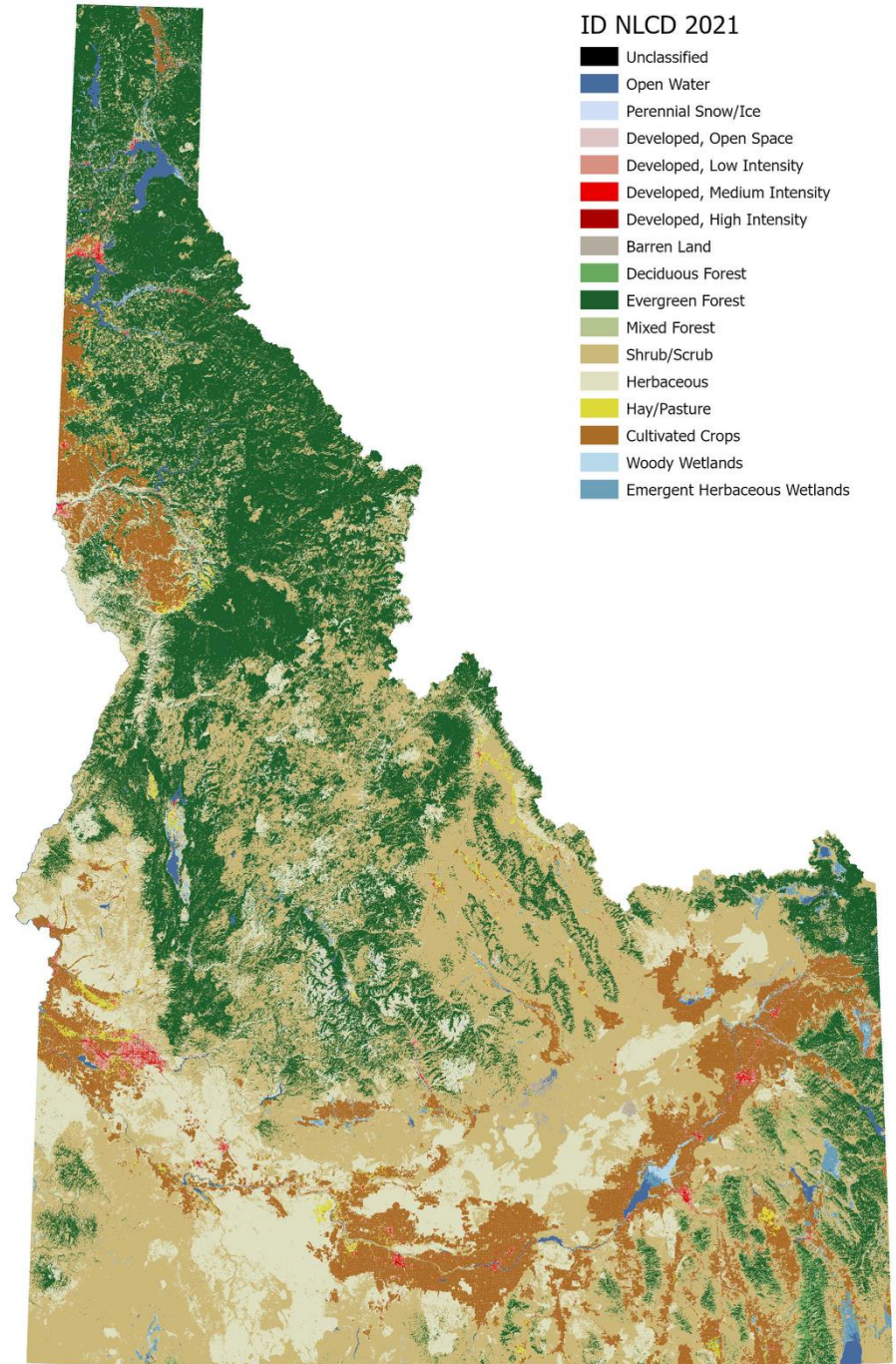
First!

- ▶ Disclaimer: We, in Idaho, have an abundance of resources. Not only natural resources, but also comparatively speaking, in infrastructure related to forest markets.

Compared to most our neighbors in the west we still have a relatively healthy and somewhat diverse forest products sector.



Idaho Land Cover Types



Idaho Land Management

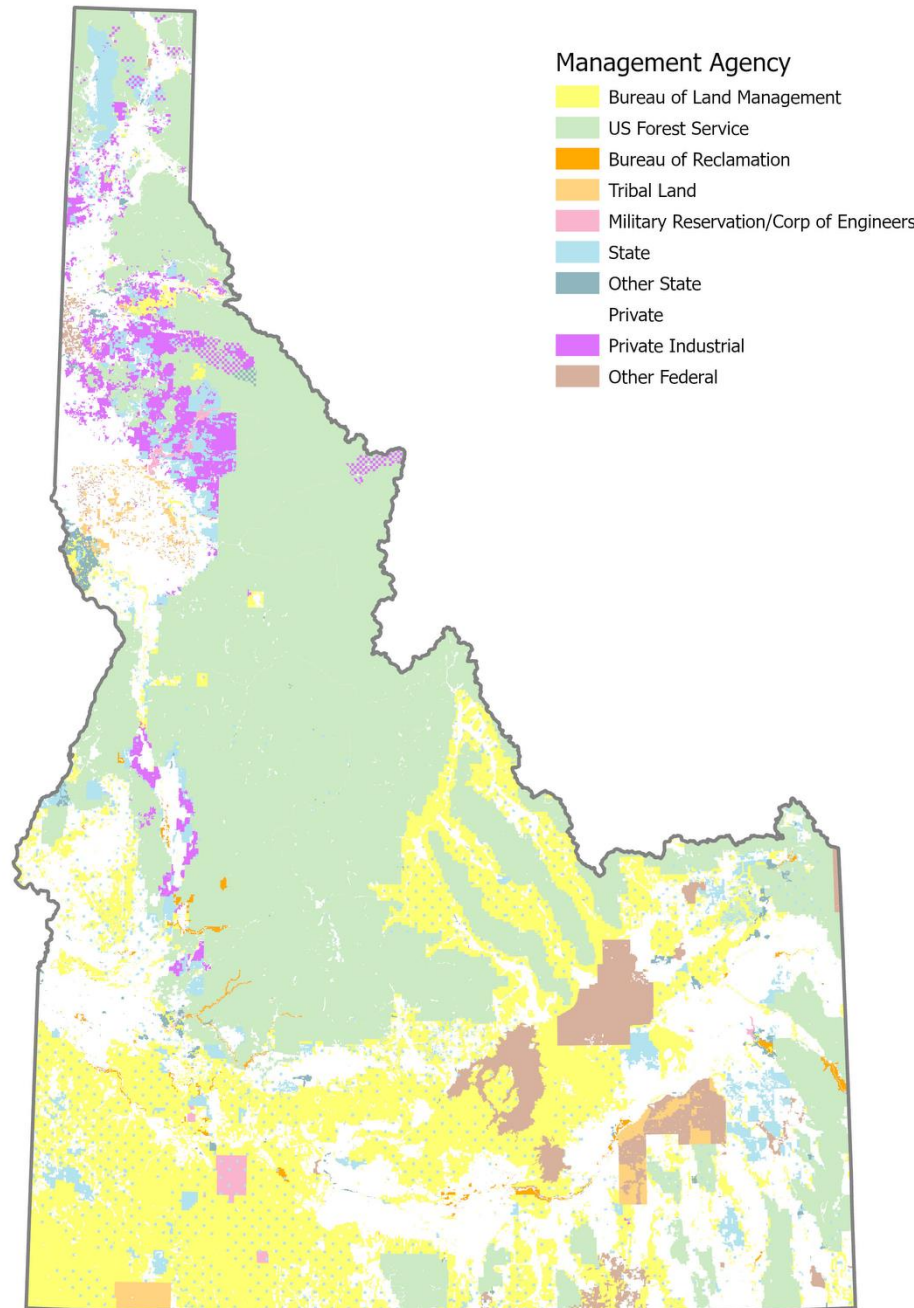
Forested Lands

Federal – 12.6 M acres – 74%

State – 1.02 M acres – 6%

Industrial – 8.4 M acres – 8%

NIPF – 1.93 M acres – 12%



Idaho Industry Infrastructure

▶ 2019 Numbers

- 24 sawmills
- 16 residue-related products facilities (includes 1 paper mill)
- 14 log home facilities
- 13 post, pole, and log furniture producers
- 5 cedar product manufacturers
- 1 plywood/veneer plant



Second

- ▶ We have a mission – To professionally and prudently manage Idaho's endowment assets to maximize long-term financial returns to the public schools and other trust beneficiaries and to provide professional assistance to the citizens of Idaho to use, protect, and sustain their natural resources.



Sometimes that mission can create conflict

- ▶ If our mission is to maximize revenues from endowment lands wouldn't GNA adding more volume to the mix diminish prices?
- ▶ Yes, it does.
- ▶ Important to focus on “Long-Term”
- ▶ Stable for now is not stable for the long-term





IDL GOOD NEIGHBOR AUTHORITY

GNA

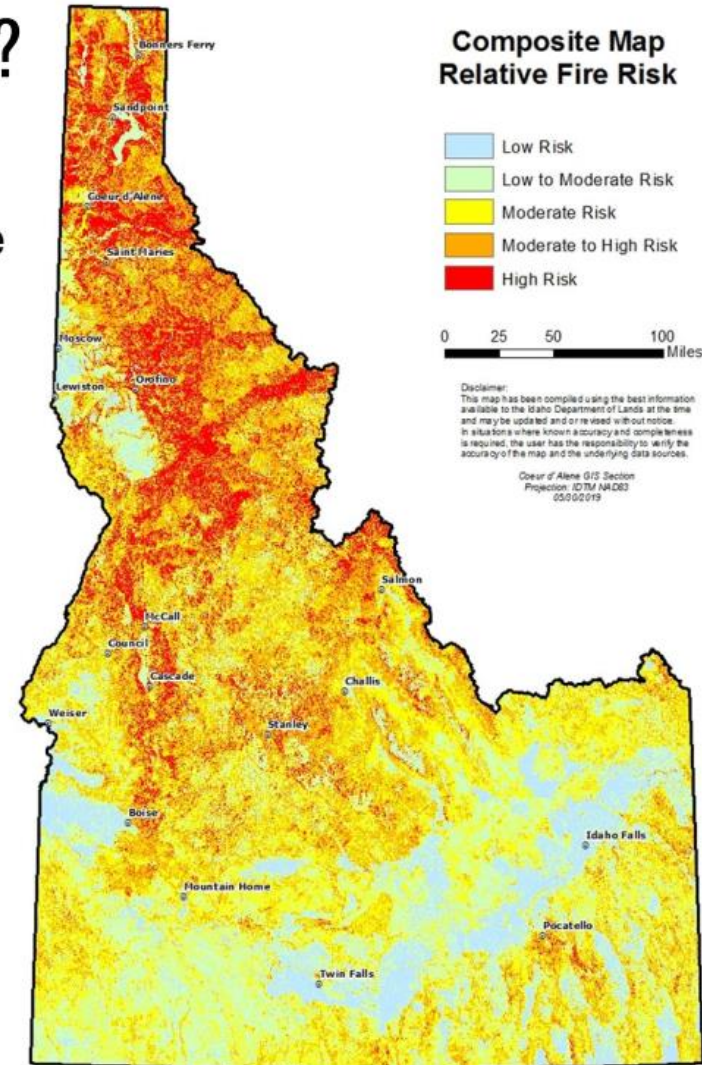
GNA History

- 2015: Following authorization in the 2014 Farm Bill the Idaho Legislature, via SCR 126, directs IDL to utilize GNA to “carry out forest, rangeland and watershed restoration services on appropriate federal lands within Idaho”
- 2016: IDL – USFS R1/R4 enter Master GNA agreement, additional supplemental agreements
- 2017: state of Idaho, **Forest Products industry and USFS commit seed money** to standup GNA
- 2018: Idaho Shared Stewardship Agreement
- 2019: IDL establishes a new Bureau dedicated to work on federal lands
- 2020-2025: exponential program growth -
FTEs, agreements, budget, project implementation

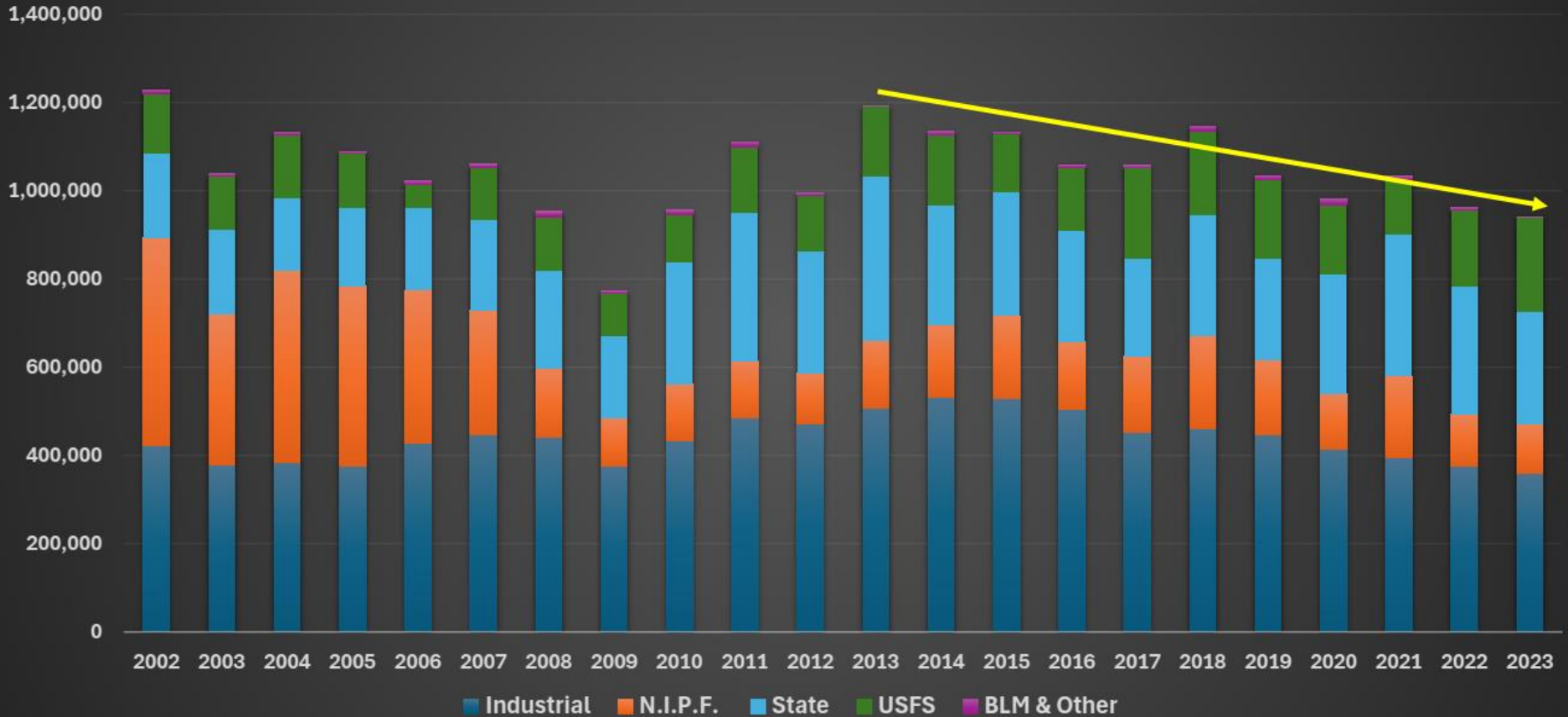


GNA – WHAT'S IN IT FOR IDAHO?

- ✓ Reduced threats from wildfire, insect and disease
 - Public safety, forest health, habitat, air/ water quality
- ✓ Additional fiber to sustain Idaho's forest products industry & workforce
- ✓ State and local economic contributions
- ✓ Improved forest road infrastructure
 - Wildfire management, safe ingress, access to recreation, watershed protection



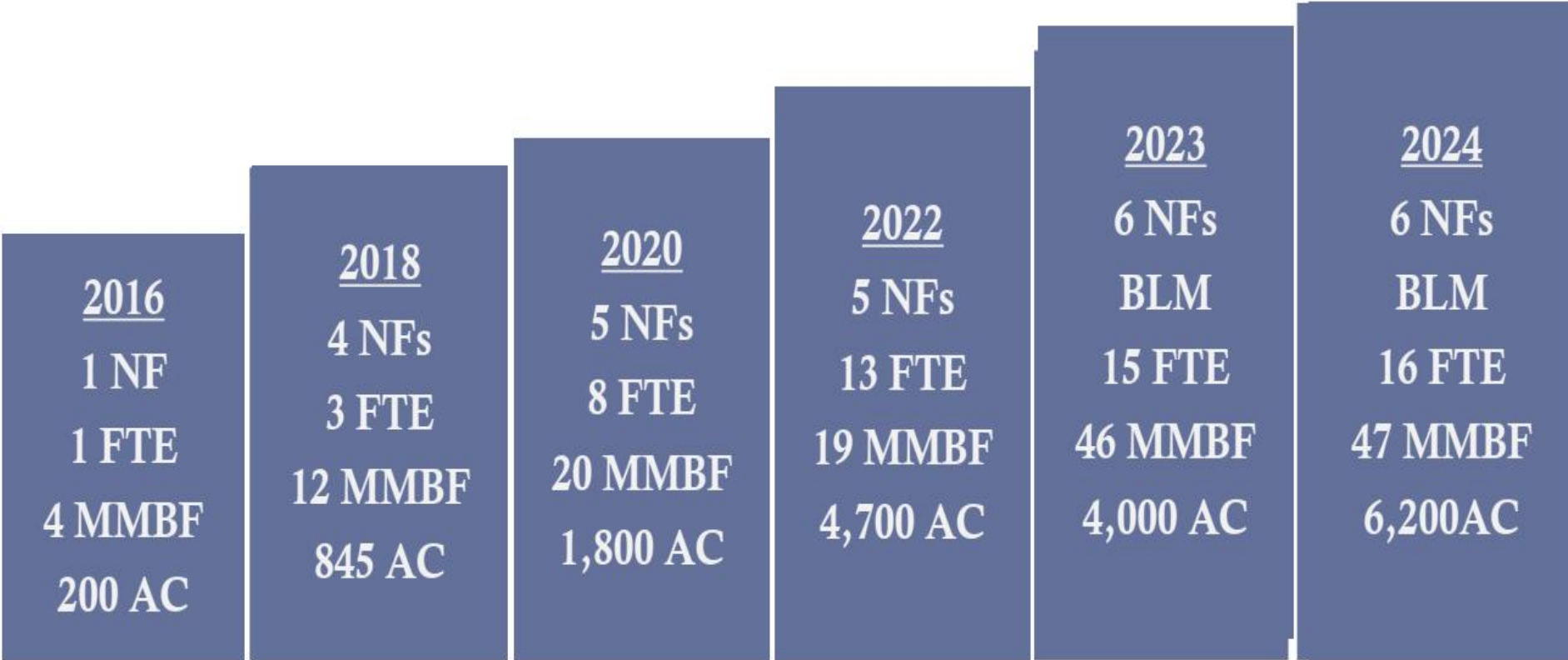
IDAHO TIMBER HARVEST



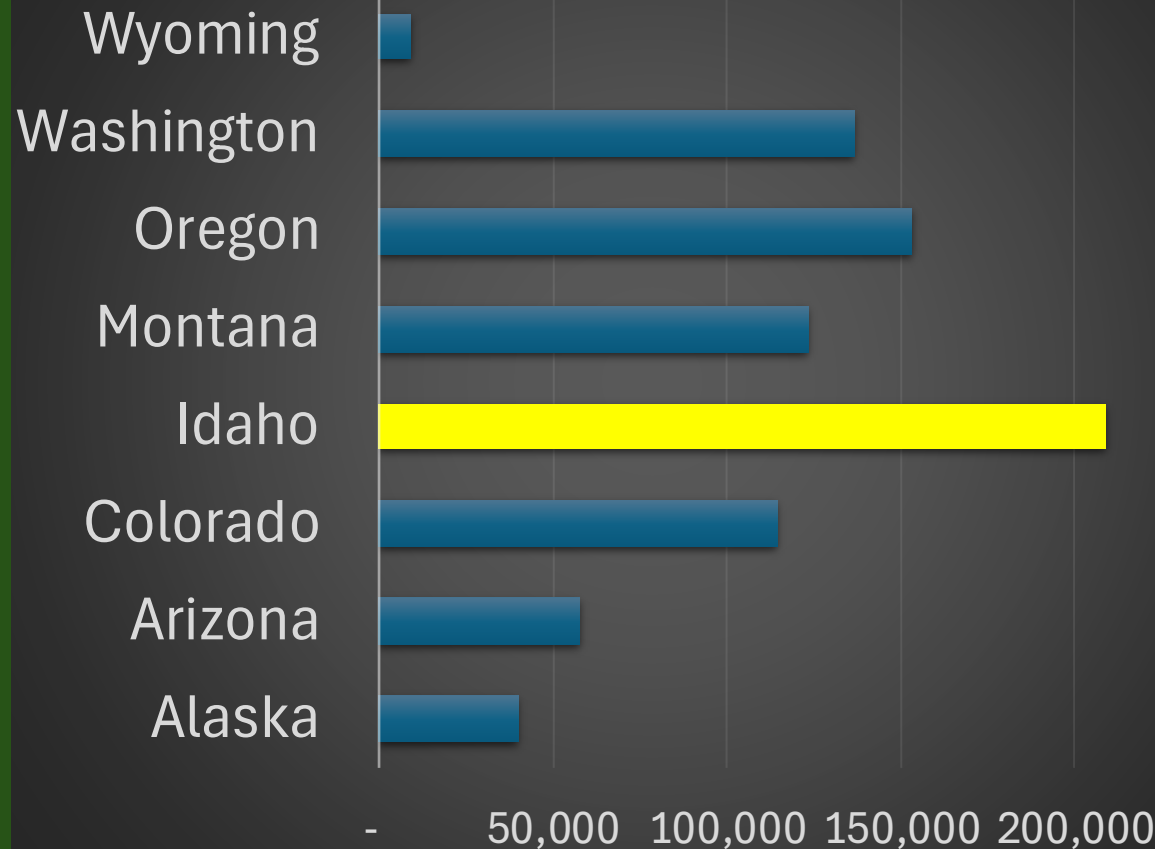
2015 GNA Working Group Goals

- ▶ Increase the pace and scale of forest, watershed, rangeland restoration on federal land
- ▶ Develop a self-sustaining program
- ▶ Provide **additive** fiber to markets





GNA Timber Vol Sold (MBF) to Date



64 Timber sales

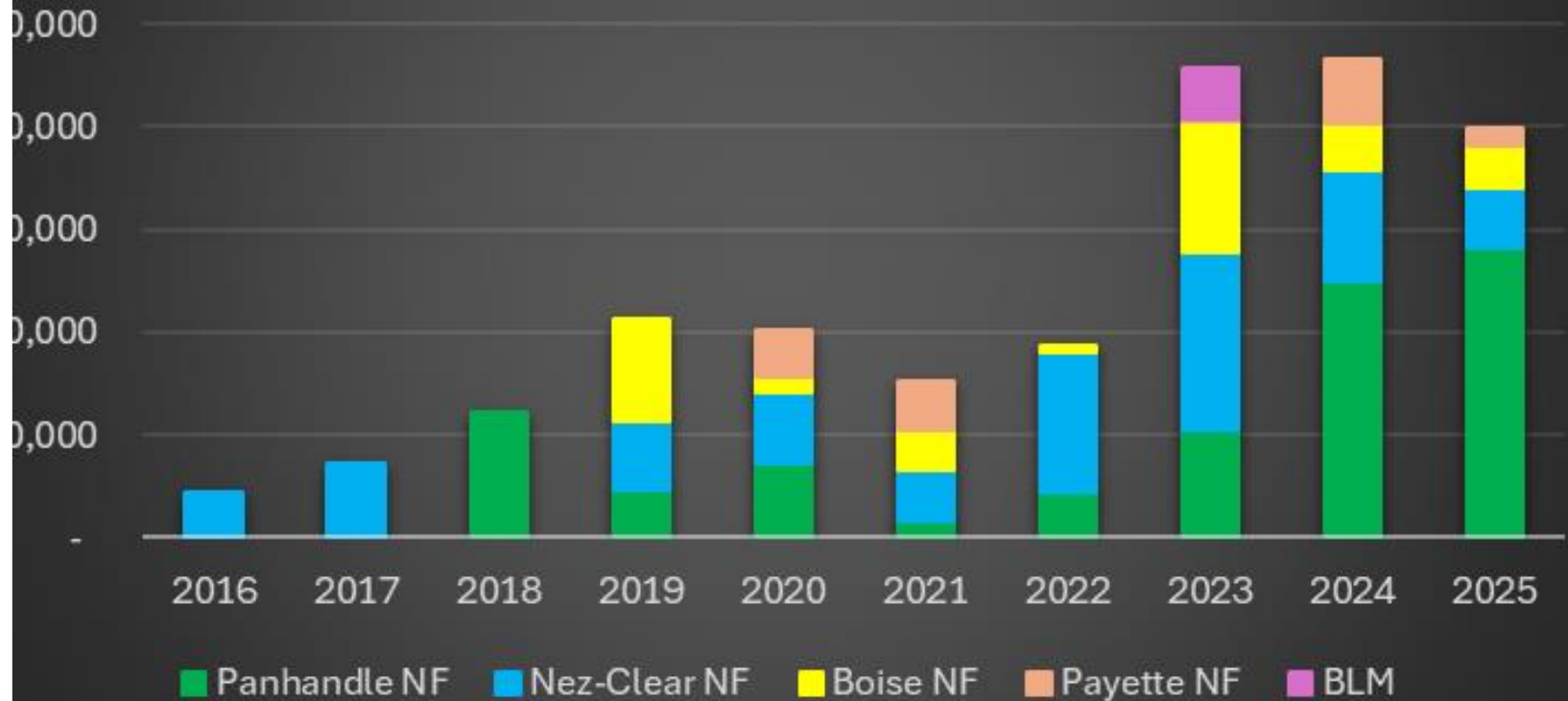
16,570 Acres

209 M BF sold

\$21 M in receipts

**20%+ Annual USFS
vol in sold in ID**

Annual GNA Timber Vol Sold (MBF/CY)





IDL GNA SFY2025 Highlights

14 GNA Timber Sales Awarded

- 53.7 total MMBF, 4,510 total harvest acres
- \$9.4 million total net sale value

40 GNA Restoration Contracts Awarded (\$2.4M value)

- 13 road improvement projects
- 2,500 ac hazardous fuels treatments
- 750 ac reforestation
- 4 Project Planning/NEPA contracts

IDL-Sawtooth NF GNA Agreement Executed Sep 2025



◀ PRESIDENTIAL ACTIONS

Immediate Expansion of American Timber Production

The White House

March 1, 2025



IMPLEMENTING GOVERNOR LITTLE'S MAKE FORESTS HEALTHY AGAIN ACT

Challenges:

- Capacity and funding are the big challenge
- NEPA bottleneck to development of additional projects
- Milling infrastructure and logging and hauling capacity
- GNA Agreements are cumbersome, lack needed flexibility



IMPLEMENTING GOVERNOR LITTLE'S MAKE FORESTS HEALTHY AGAIN ACT

Opportunities:

- Prioritize At-Risk Lands
- Expand GNA to Increase Active Management on Federal Forestlands
- Expand Shared Stewardship Cross-Boundary Capacity
- Develop IDL agreements with counties, state agencies, and other partners
- GNA Agreements are cumbersome, lack needed flexibility
- Update relevant agreements, seek additional funding

GNA Summary

- ▶ GNA in Idaho is a **program** to get more work done on federal lands and sometimes on adjacent lands as well using state resources and processes to create efficiency.
- ▶ How big does our program become???



Idaho's GNA Agreements and Shared Stewardship

#NOBOUNDARIESFORESTRY

Idaho Forest Action Plan &
Shared Stewardship Cross-Boundary Initiatives





Shared Stewardship

- ▶ In Idaho Shared Stewardship is a **program** to do things differently to get more done.
- ▶ The program takes existing resources and pools them creatively to maximize the impacts of treatments in prioritized landscapes.



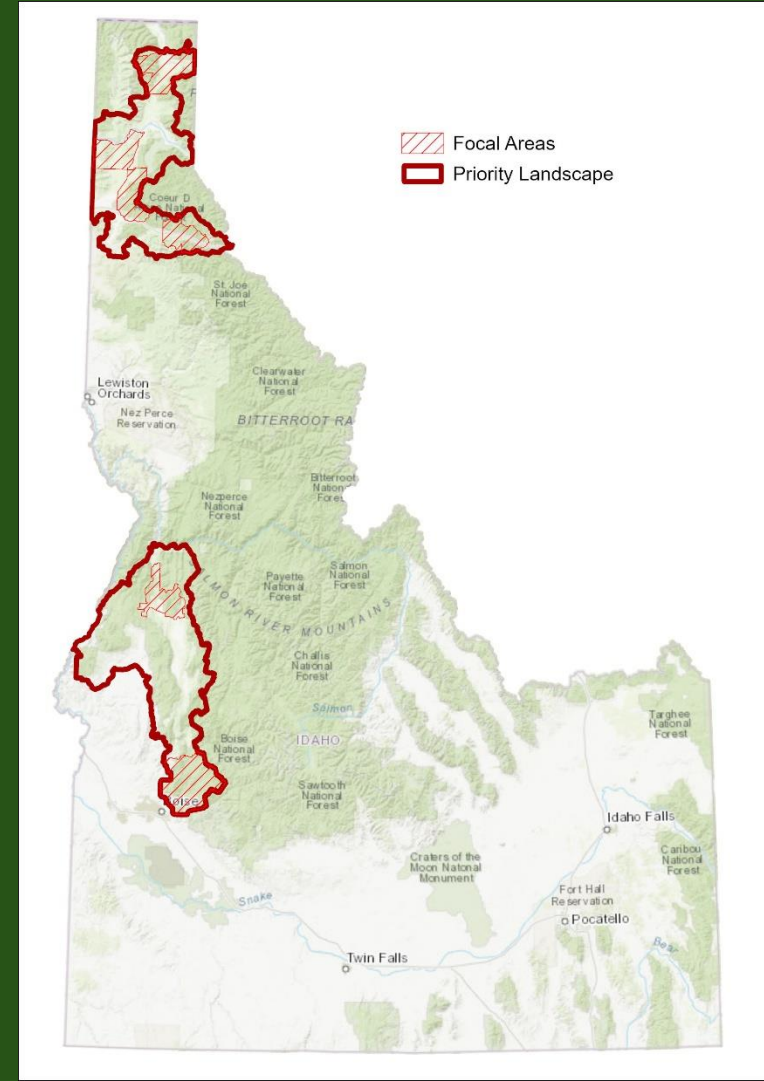
IDAHO SHARED STEWARDSHIP

► Shared Stewardship

- *Shared Stewardship Master Agreement signed in 2018*
- *Increasing pace and scale of fuels-reduction treatments on federal, state, private and tribal forestlands*

► Priority Landscapes

- *Designated by the IDL State Forester and USDA Forest Service Region 1 and Region 4 Foresters in 2019*
- *Modifications to southern PL boundary in 2022*



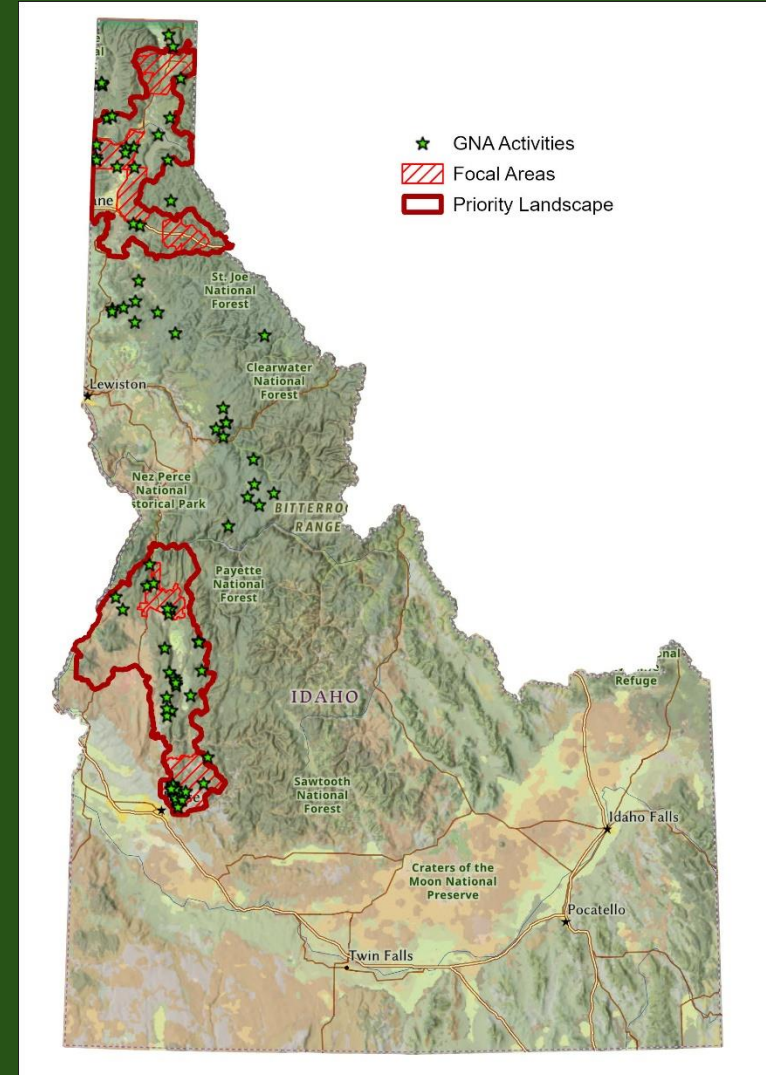
IDAHO SHARED STEWARDSHIP

STATEWIDE PROGRESS
WITHIN S² PRIORITY LANDSCAPES

3 National Forests:

- Idaho Panhandle National Forests
- Payette National Forest
- Boise National Forest

★ = Projects on National Forests and BLM Lands Administered by **IDL GNA** Foresters



North-Idaho Shared Stewardship Priority Landscape 2024 & 2025 Accomplishments

USFS

30,551
acres

GNA

2,408
acres

IDL

7,775
acres

Boundary,
Bonner,
Kootenai
Counties
(fuels
reduction)

1,725
acres

NRCS
EQIP

6,675
acres

Private
Industrial
&
Nonindus
trial
Planned
Harvests

77,954
acres

South-Idaho Shared Stewardship Priority Landscape 2024 & 2025 Accomplishments

USFS

68,81
3 acres

GNA

6,760
acres

IDL

7,960
acres

Adams,
Valley,
Boise
Counties
*(fuels
reduction)*

1,867
acres

NRCS
EQIP

984
acres

Private
Industrial
&
Nonindus
trial
Harvested

9,047
acres

County GNA Agreements

- Adams County
- Valley County
- Boise County
- Idaho County



Spring 2022 – Southwest Idaho Wildfire Crisis Strategy Landscape is designated



Fall of 2022 - Payette National Forest signs GNA Agreement with Adams County – the first use of the county provision of GNA in Idaho.



Bipartisan Infrastructure Law funded 5-year agreements used to complete cross-boundary treatments on Forest Service lands and private lands.

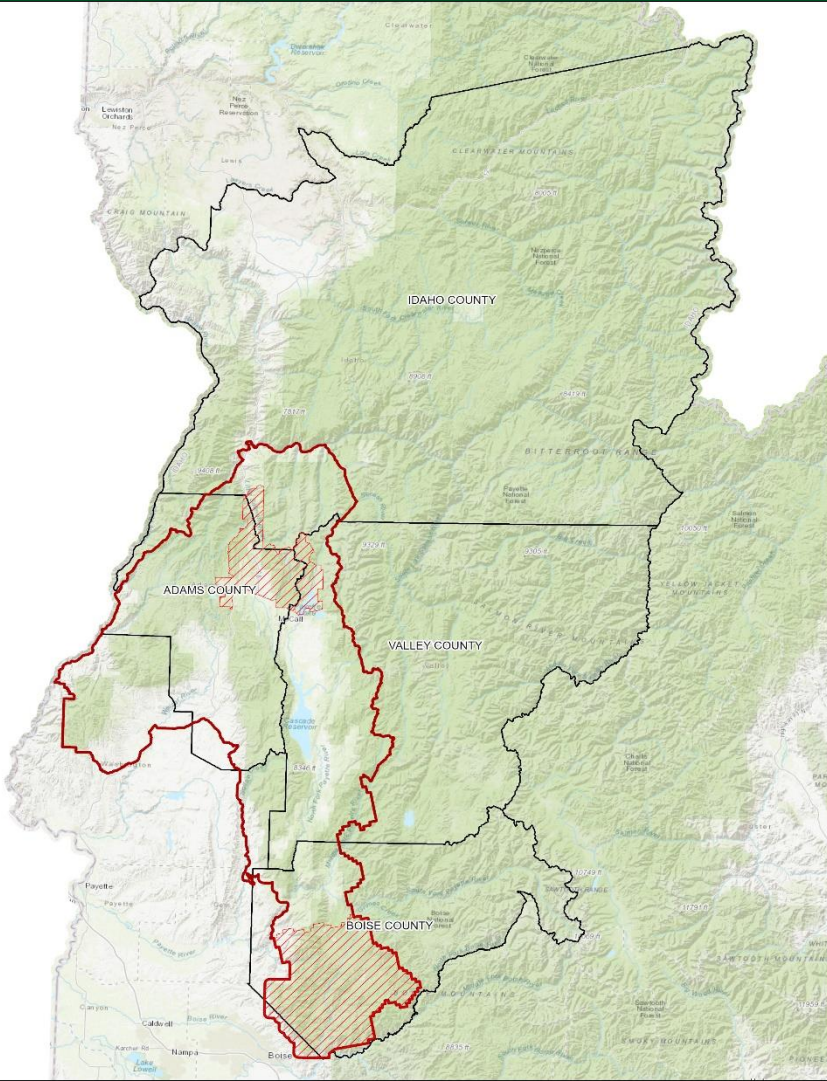


The GNA agreements are set up to fund additional County staff to handle the increased workload



Shared Stewardship working with Counties to find additional grant funding with the goal of creating a long-term, self-sustaining program

2023 County GNA Funding

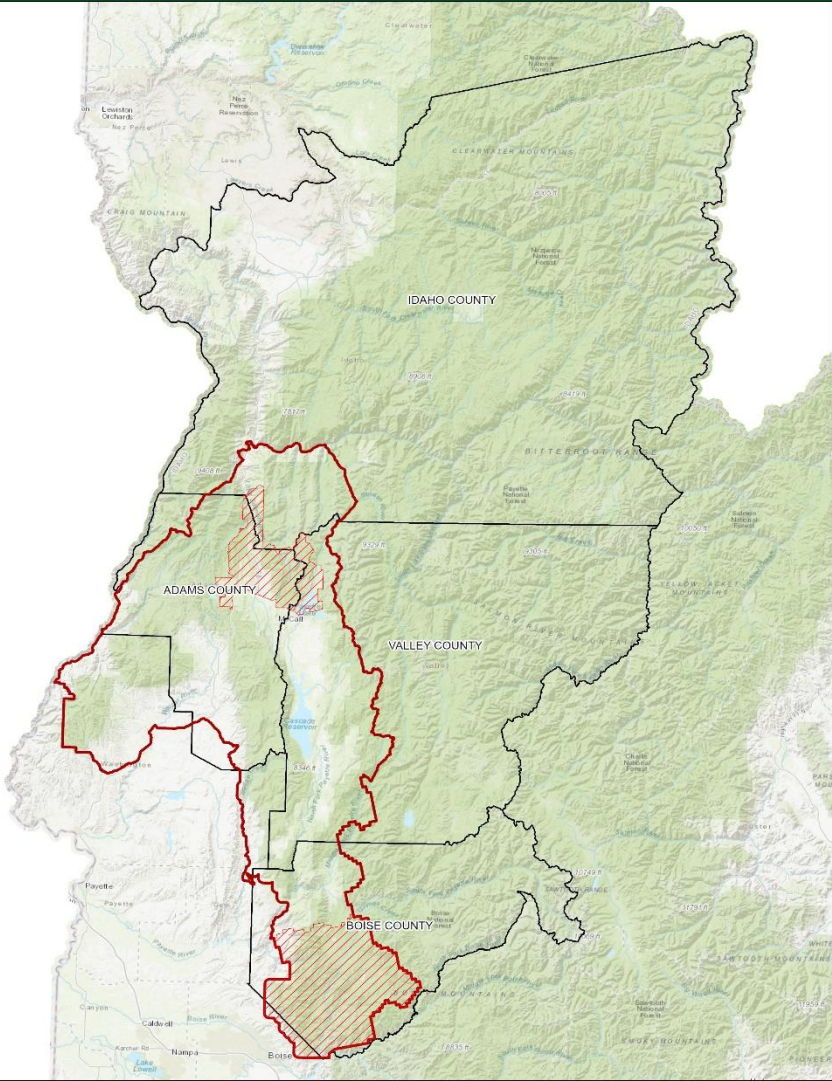


Adams County
\$795,000

Valley County
\$495,000

Boise County
\$600,000

2024 County GNA Funding



Adams County
\$795,000
\$995,000

Valley County
\$495,000
\$675,850

Boise County
\$600,000
\$675,000





***Mercy Fire
August 2023—Bonner County***



What has made Shared Stewardship successful

- ▶ Partnerships (Ara Andrea)
- ▶ Partnerships
- ▶ Partnerships
 - We have two USFS employees embedded into our offices, Jeff Lau in our CDA Staff Office and Brian Davis in our Payette office.



Closing

- ▶ In Idaho GNA and Shared Stewardship are viewed not as tools but as programs to increase the pace and scale of forest management across all land ownerships.

