



Mapping The Course

Denny Jones
May 13th, 2026

Today's Presentation

Denny Jones

- 14 years in the sawmill industry
- Labor, machine operator, quality control, optimization tech, quality manager
- Oversee all quality and optimization functions at our Lewiston facility
- Lewiston's sawmill is one of IFG's largest at 300mmbf current operating level

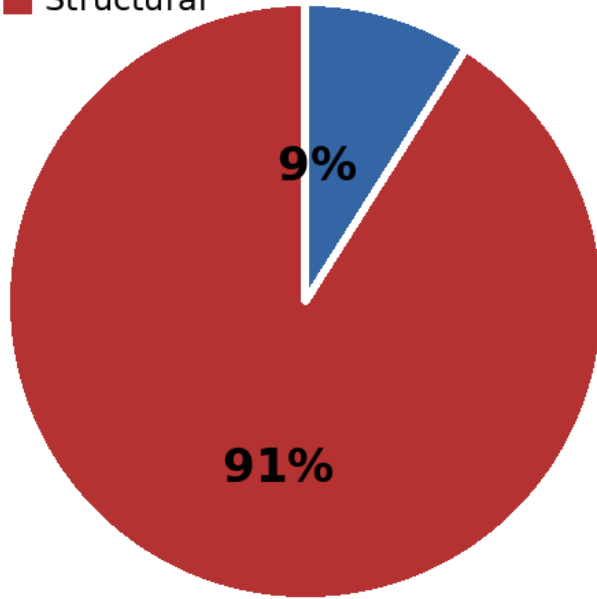


Quick Facts About IFG

- Over 1300 direct employees
- Significant Family Contractor Base
- Largest lumber producer in the Intermountain West
- Top 10 producer in the United States
- Annual production capacity of 1.4 billion board feet
- Top supplier of dimensional lumber to Lowes and now Home Depot

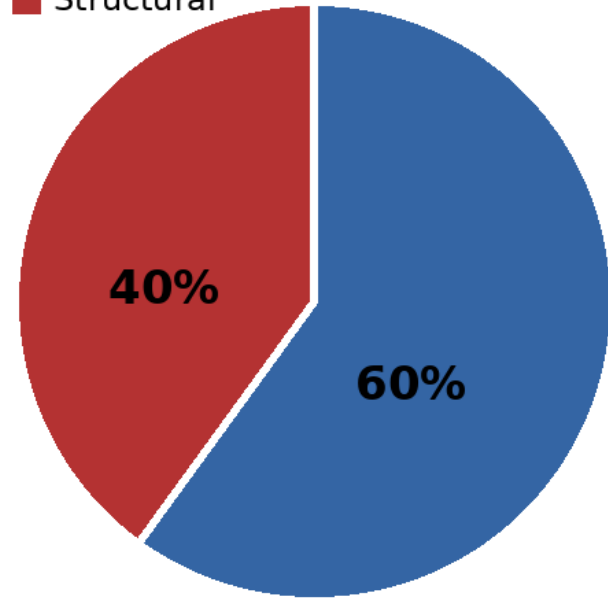
2011

■ Appearance
■ Structural



2026

■ Appearance
■ Structural



A vertical stack of light-colored wooden planks, likely pine or spruce, showing the natural wood grain and knots. The planks are stacked in a slightly offset pattern, creating a textured, layered appearance. The lighting is bright, highlighting the natural color and texture of the wood.

Microtec CT Log scanner

Opportunities

X-ray vision, saw logs from the inside out

Avoid margin negative logs

Advanced sorting for enhanced sawmill operations

Calculation of product yield sitting in Merch yard

Elevated Education for our scalers

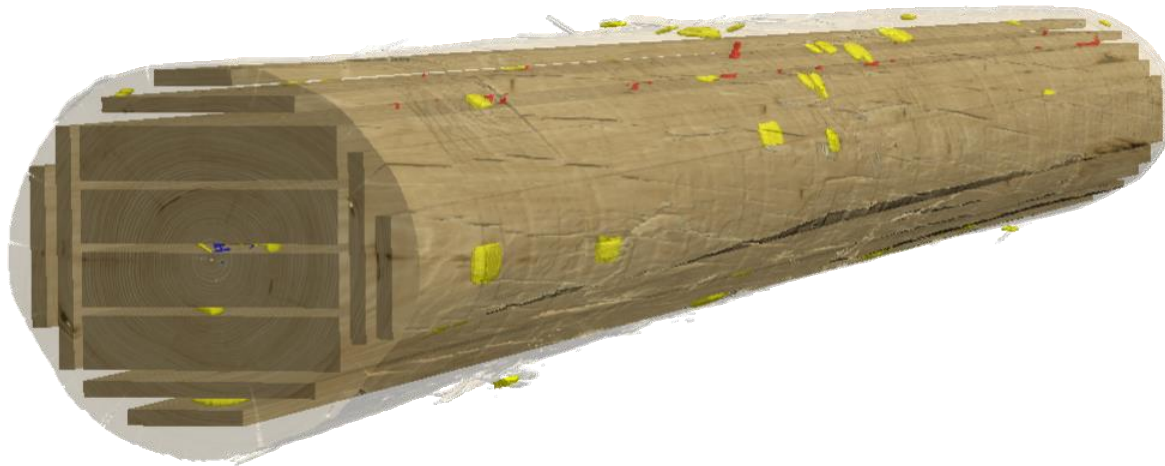
Avoid anomalies (metal, dead knots, Shakes, Splits)

Educate contractors on log quality and optimal age to harvest

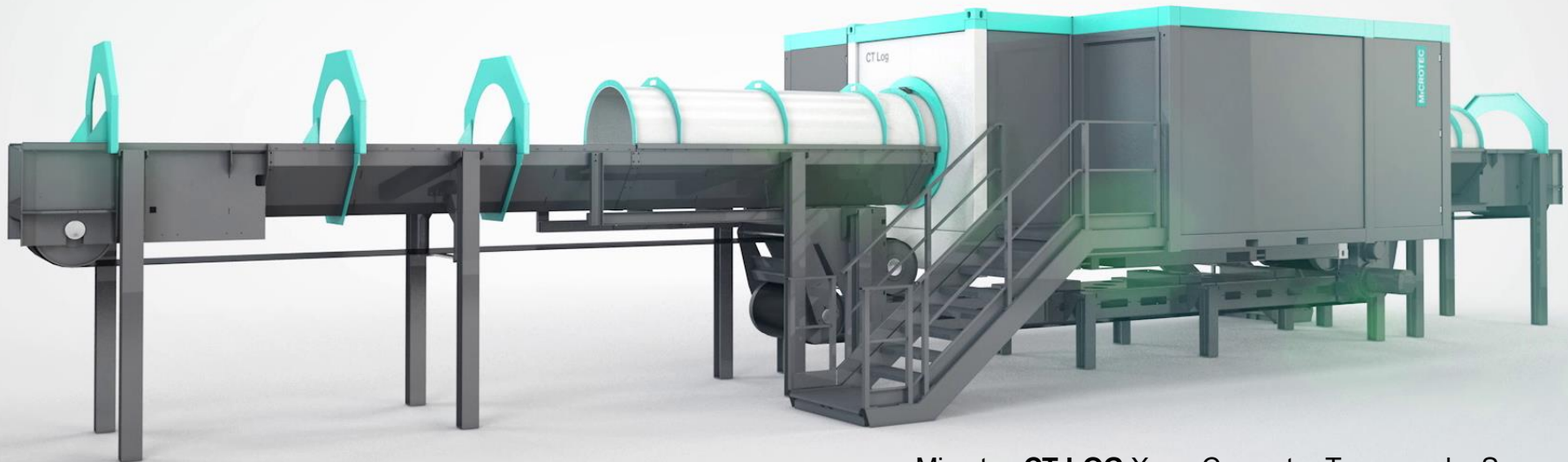
Sort out high-quality logs with higher return (vener, moldings, mantels, log homes)

Sawmiller's dream: "**Saw from the inside out**"

- See what's inside a log **before** sawing
- Use this information to optimize products for **Value** rather than Volume



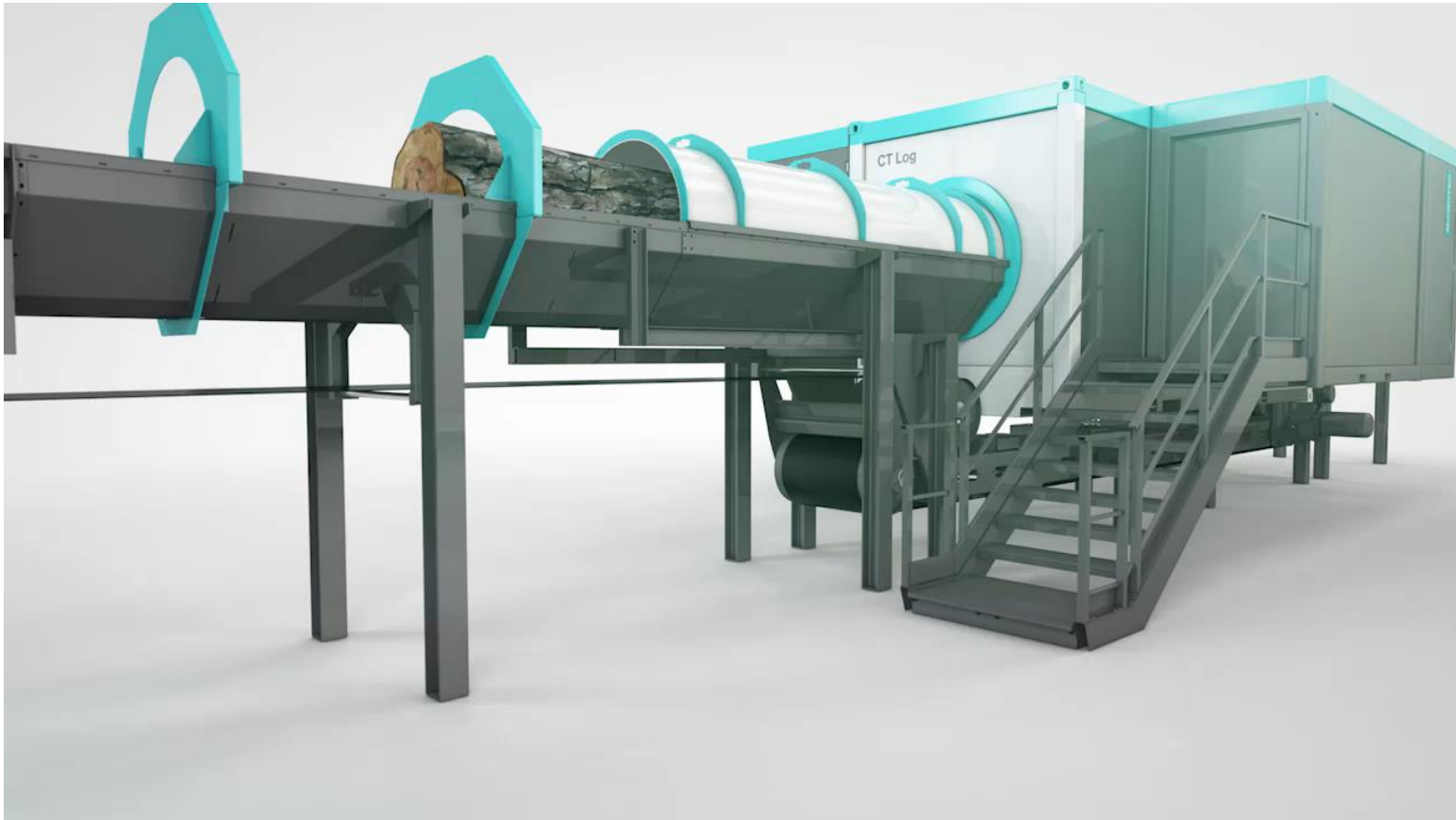
Closing the Loop:
Using x-ray technology to execute CT Log
scanner optimized sawing solutions at the sawline



Microtec **CT.LOG** X-ray Computer Tomography Scanner

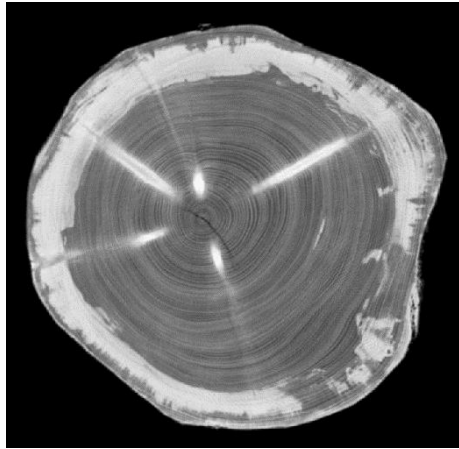
Microtec CT.Log Scanner

MiCROTEC

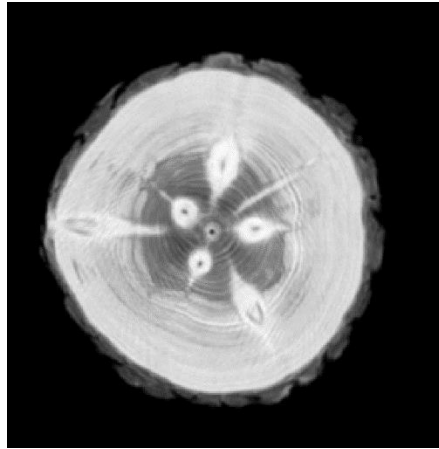


- Rotating X-ray Gantry
- 240kv Xray tube & Sensor array
- 5000lb gantry rotating at 240rpm (70G of centrifugal force)
- Mechanical drive, electrical power, and data transmission all contactless

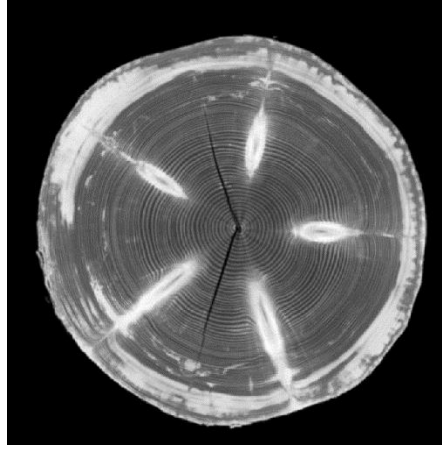
CT.Log Images of different Species



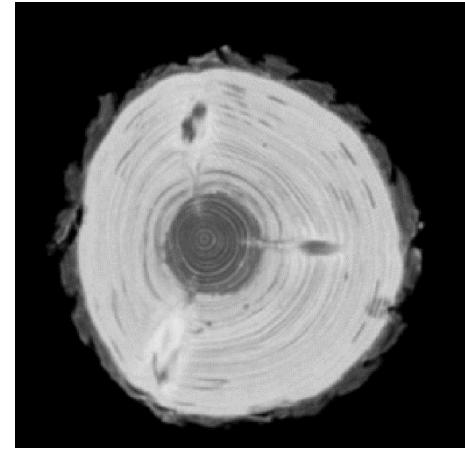
Spruce



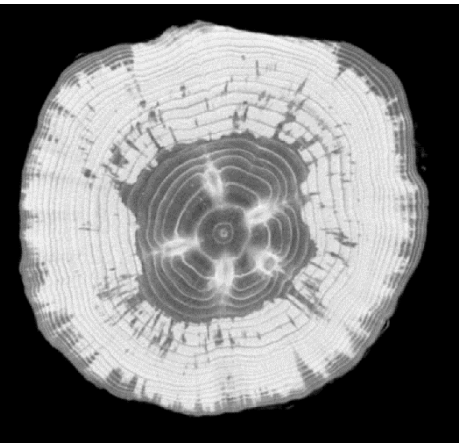
Black Pine



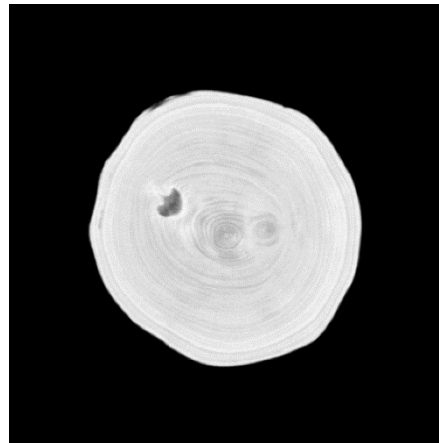
Grand Fir



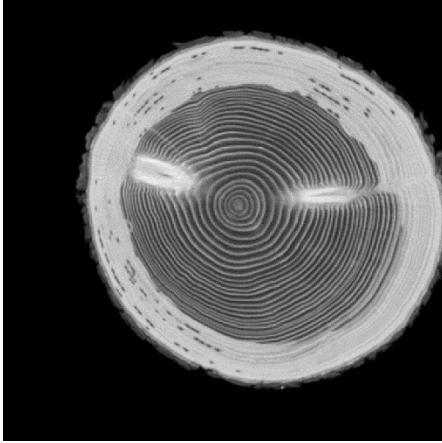
Scots Pine



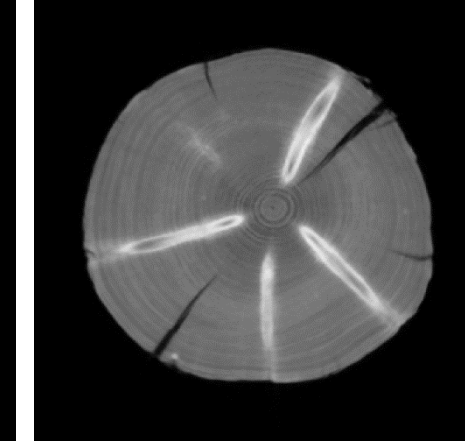
Radiata Pine



Beech



Douglas Fir

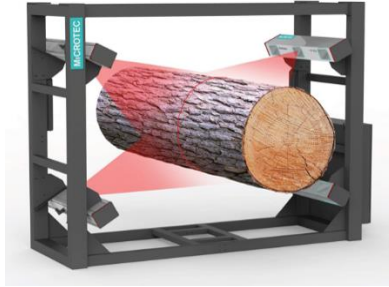


Lodgepole Pine

Traditional Log Sorting concept

MiCROTEC

Log Yard



3D scanning



Merchandizing



Geometric Sort
– either by diameter or cutting pattern

Saw Line



3D scanning



Sawing Optimization



High speed / low gap / batch mode sawing

Log Yard

Problems?

Geometric scanning: No *internal* quality in optimization

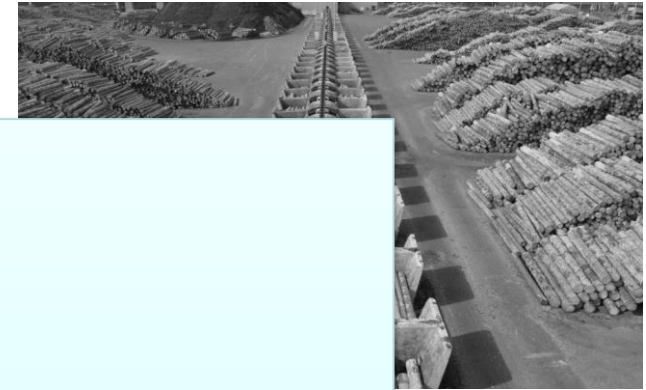
Sorting and Sawing Scanning are *disconnected*
(Scanning Decisions made in Logyard aren't executed at the Sawline)

Saw Line

3D scanning

Rotation Optimization

High speed / low gap / batch mode sawing



ter or cutting pattern



CT Log Sorting Sorting and sawing connected

MiCROTEC

Log Yard



CT Log
Full 3D internal defect scanning



Merchandizing



Geometric + Quality Sort
–cutting pattern with internal defects

Saw Line



Logeye Fingerprint
3D + Xray scanning

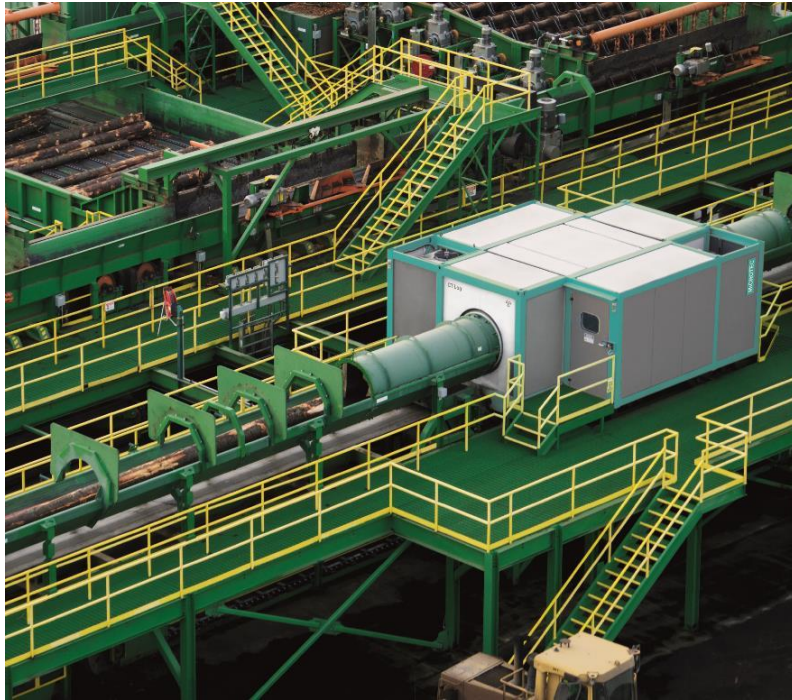


Sawing Optimization



High speed / low gap / batch mode sawing

CT Log – Merchandising and Sorting

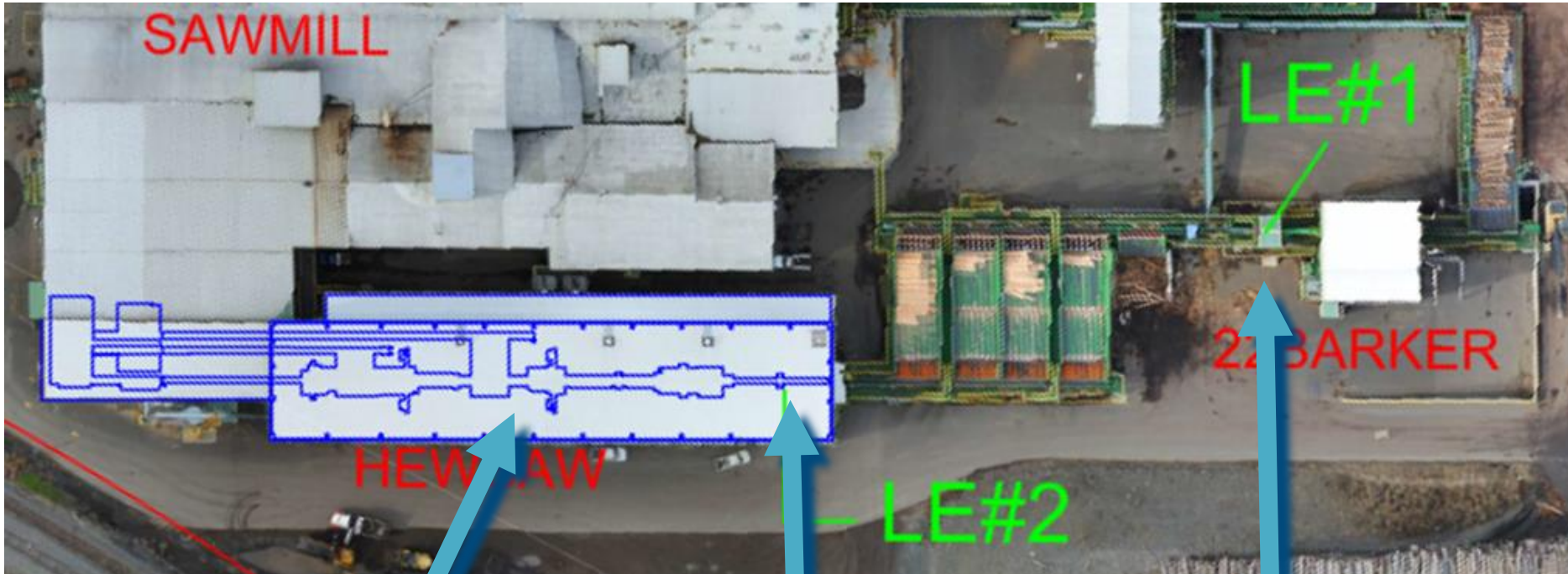


IDAHO FOREST GROUP LEWISTON



CLOSING THE LOOP WITH FINGERPRINT - EXECUTING CT SOLUTION AT THE DEBARKER/SAWLINE

MICROTEC

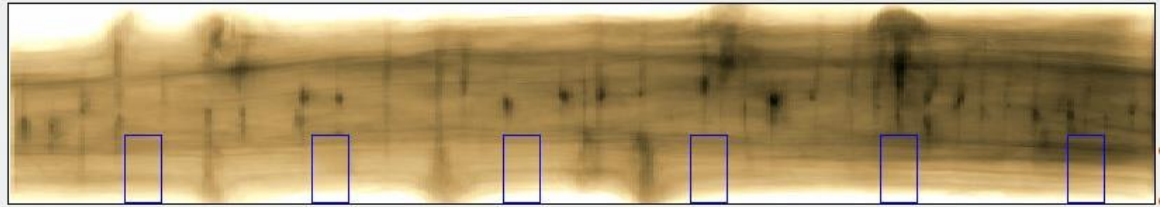


FINGERPRINT MATCHING

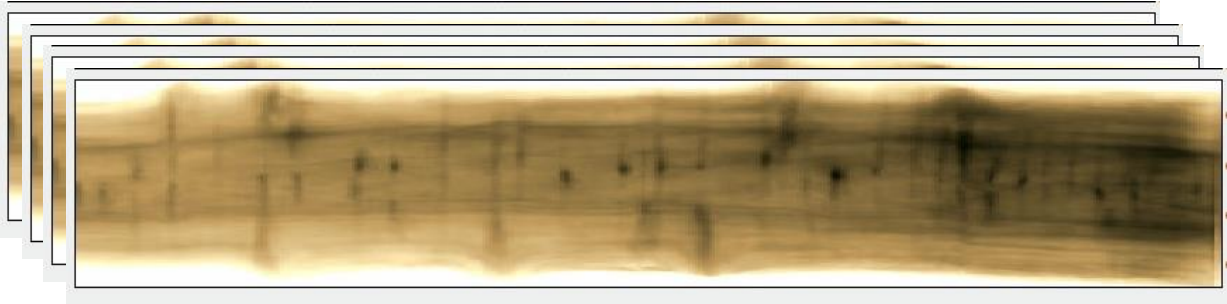
MICROTEC



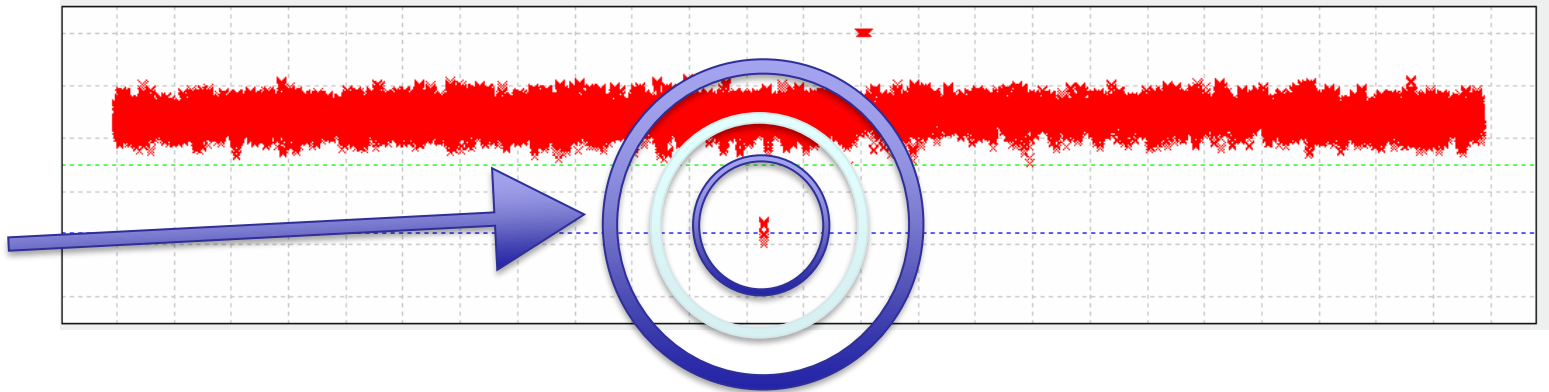
**LOGEYE X-RAY
SCAN**



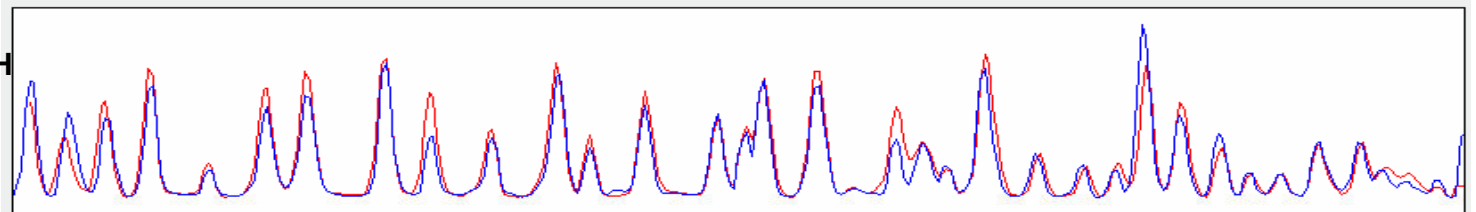
**CT.LOG X-RAY
FINGERPRINTS
(>200,000)**



**COMPARISON
BETWEEN
200,000 LOGS**

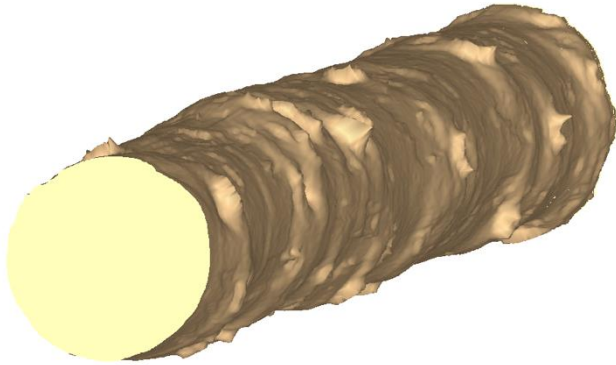


**FINGERPRINT MATCH
(RED=CT,
BLUE=LOGEYE)**

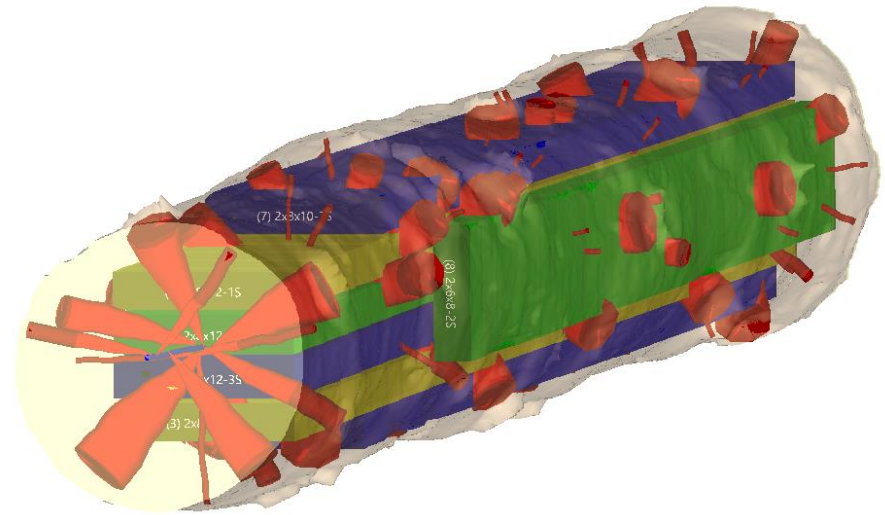


AFTER 1 WEEK STORAGE AND AFTER DEBARKING, LOG'S OUTER SHAPE CAN CHANGE!

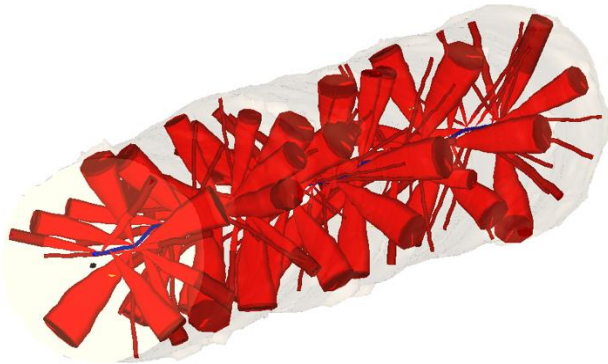
NEW DEBARKED GEOMETRIC SHAPE



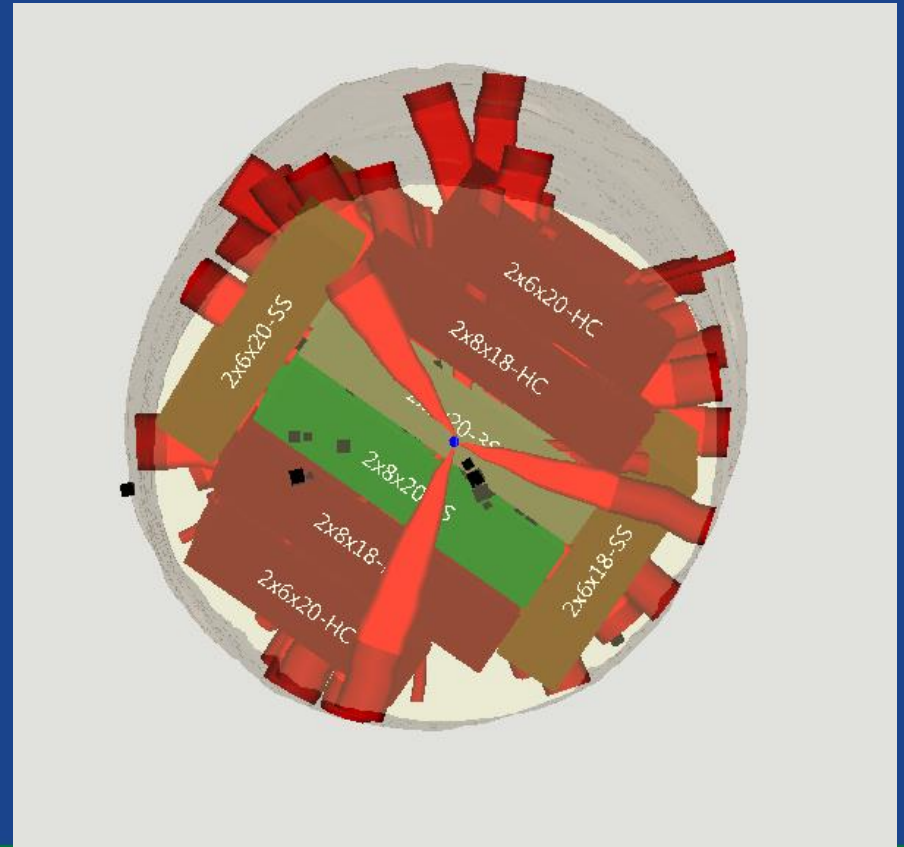
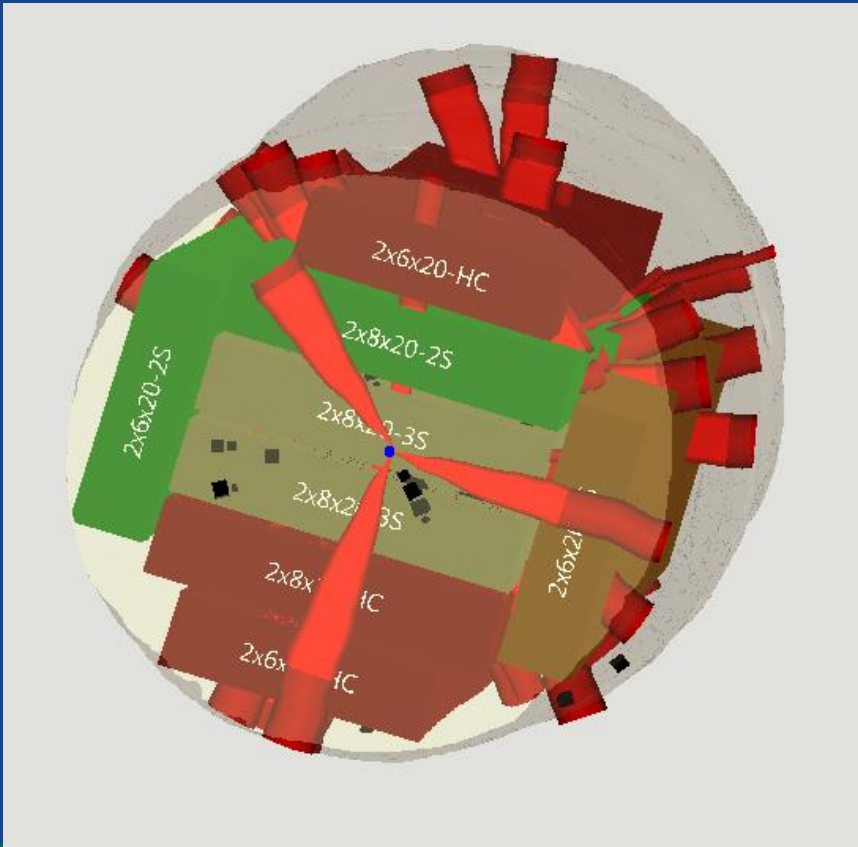
NEW 3D SHAPE AND CT INTERNAL DEFECTS ARE MERGED TOGETHER AND FULLY RE-OPTIMIZED



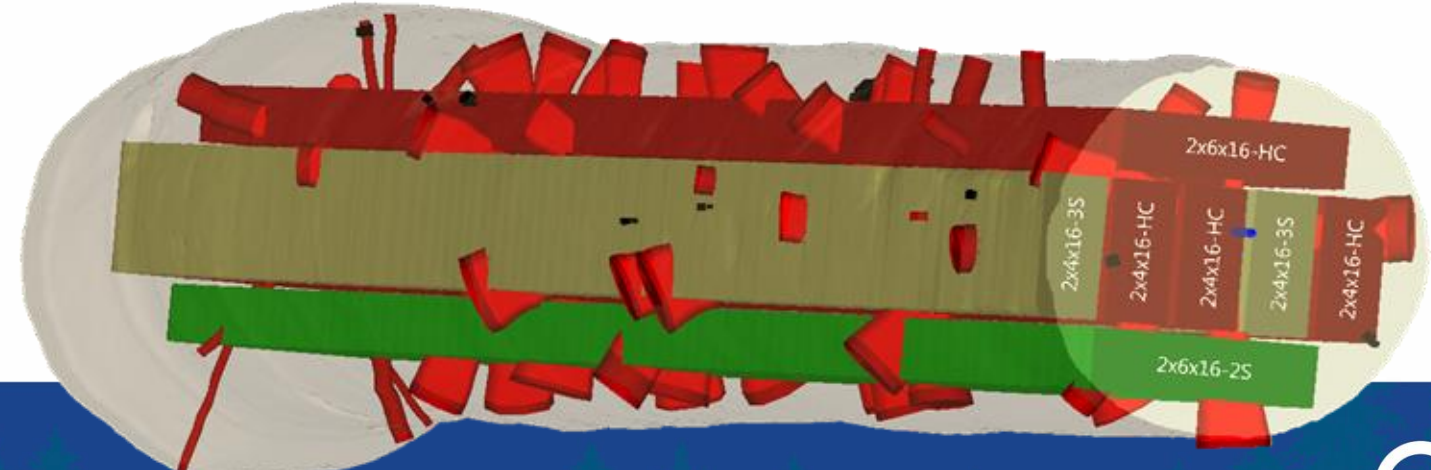
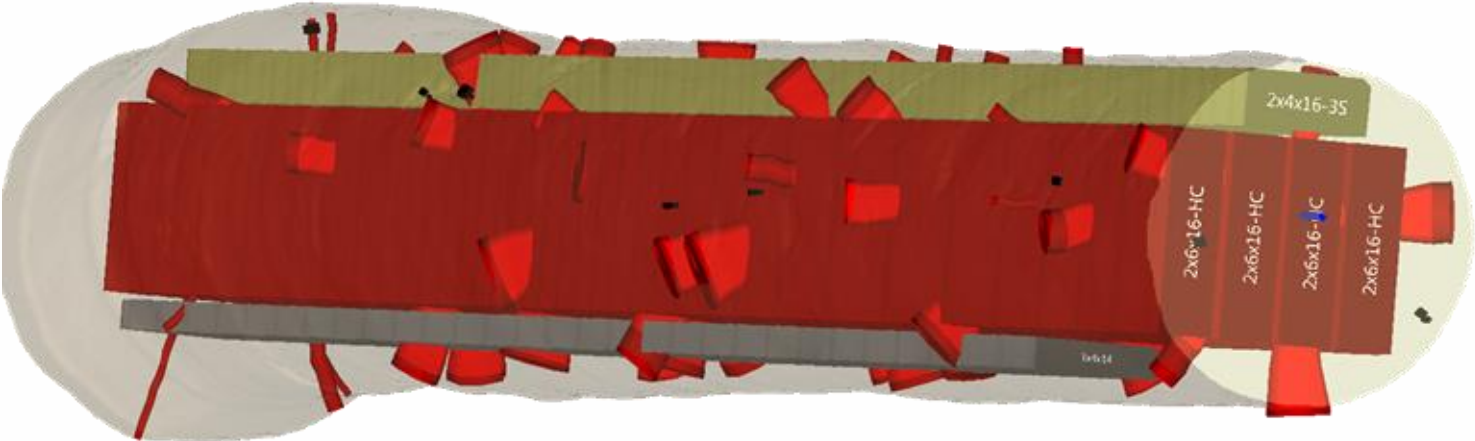
ORIGINAL CT INTERNAL DEFECTS



18 DEGREES ROTATION CHANGES THE VALUE +8% WITH -1% VOLUME



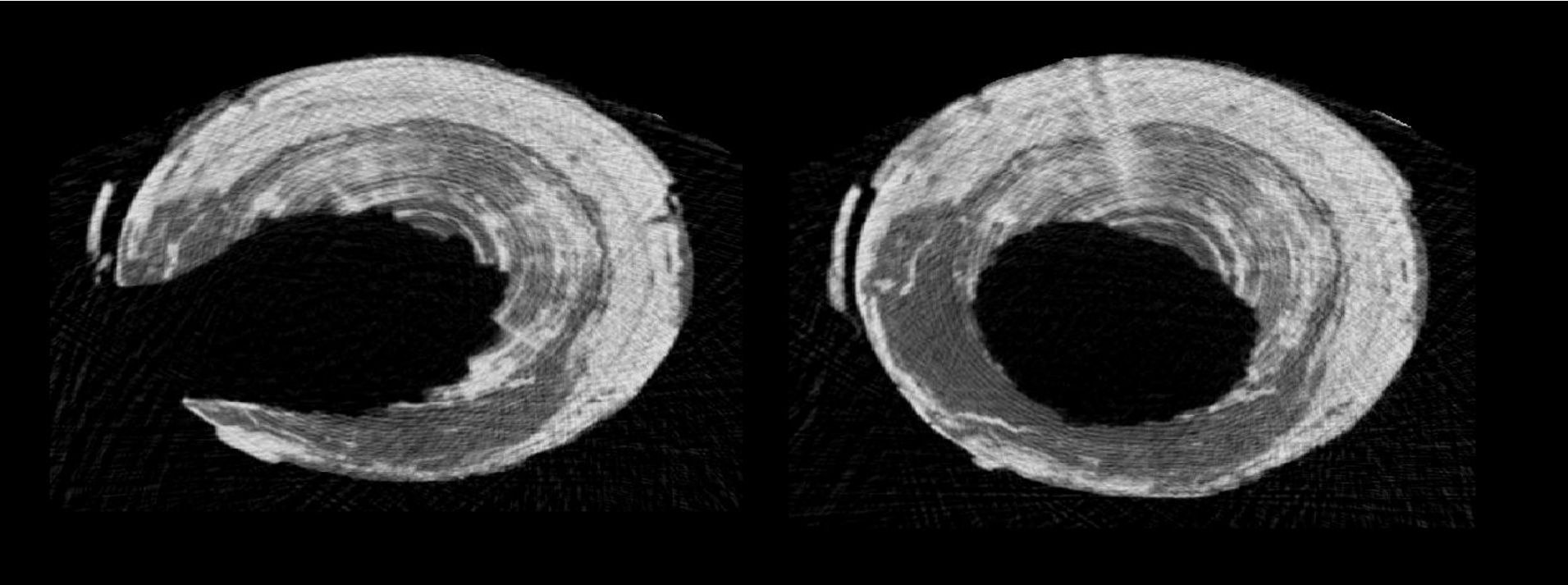
CT data changes cant width and pattern



Woodpecker nest



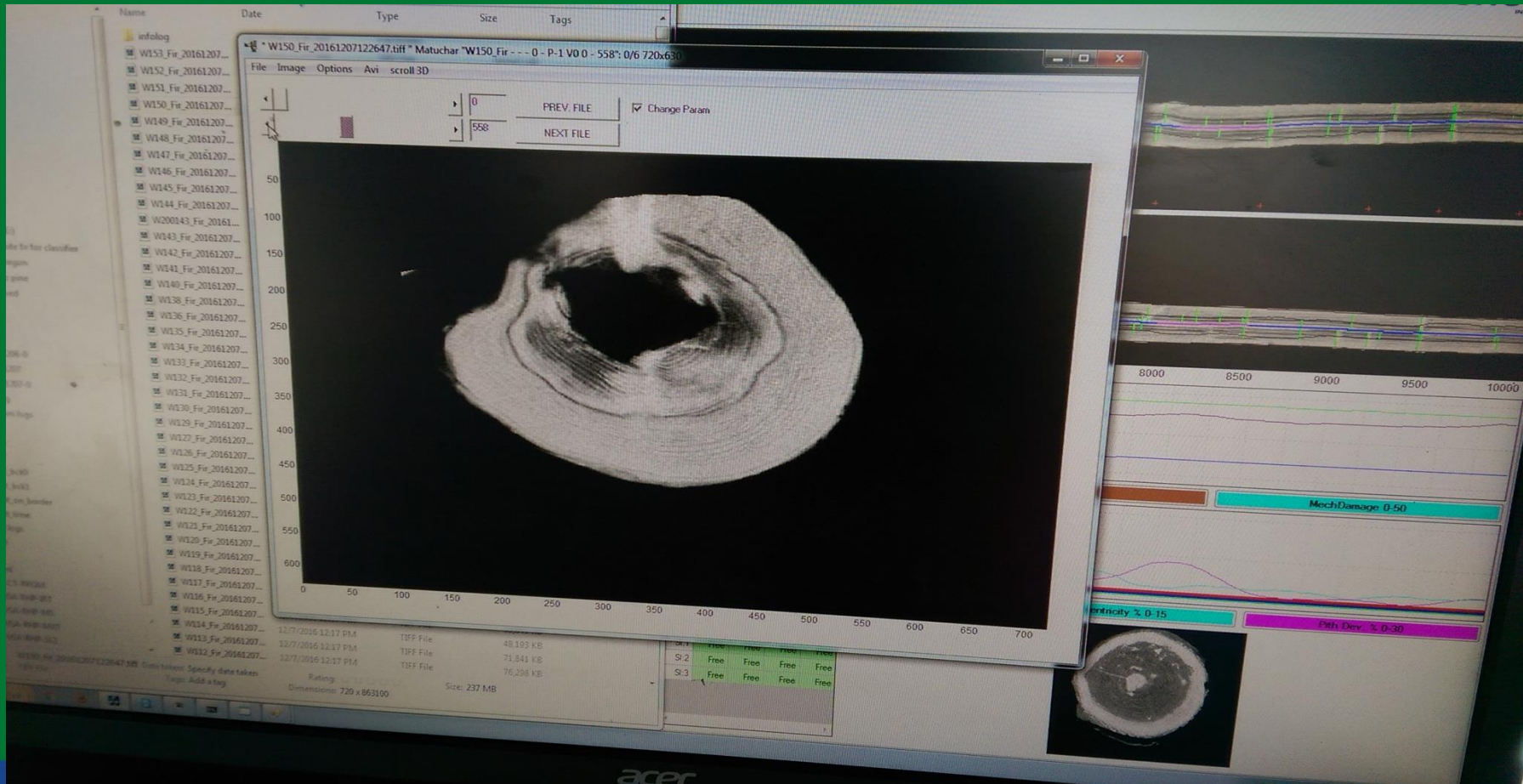
Woodpecker CT images



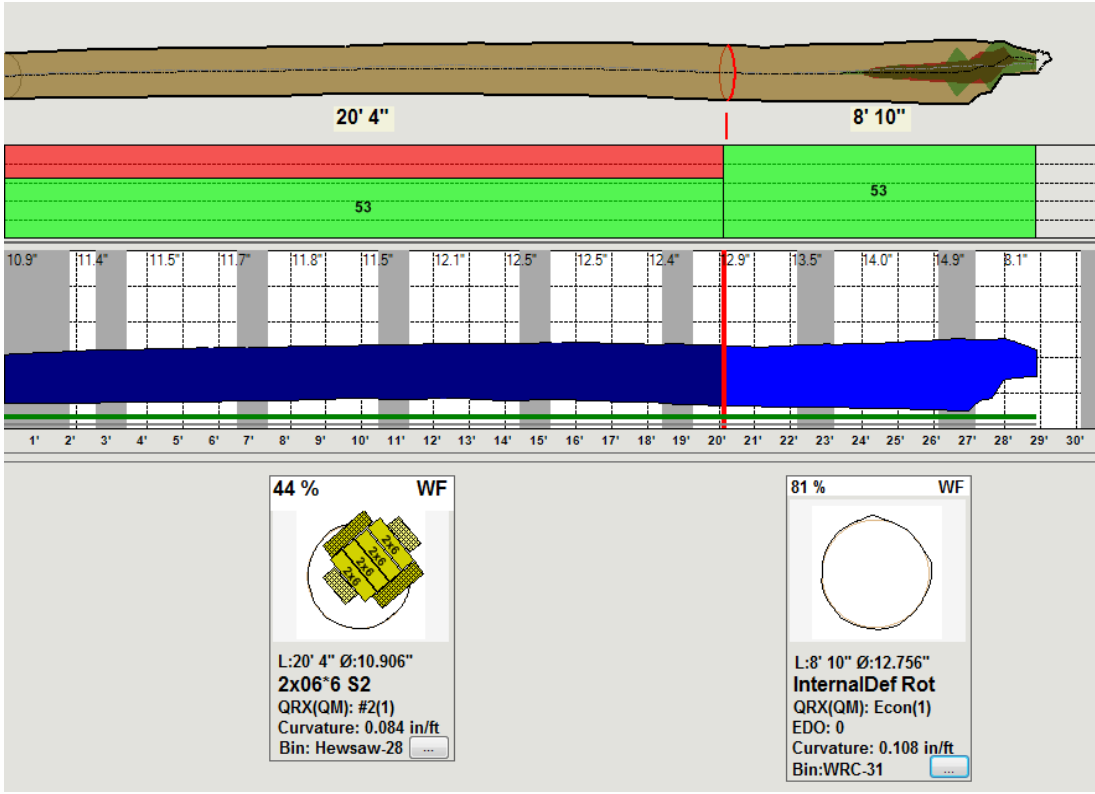
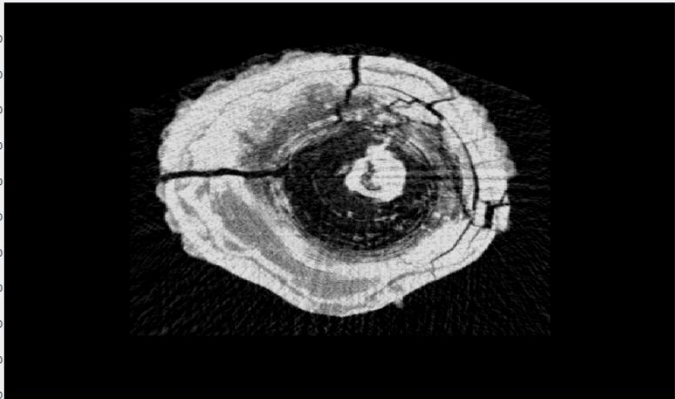
REVENUE NEGATIVE LOG EXAMPLE



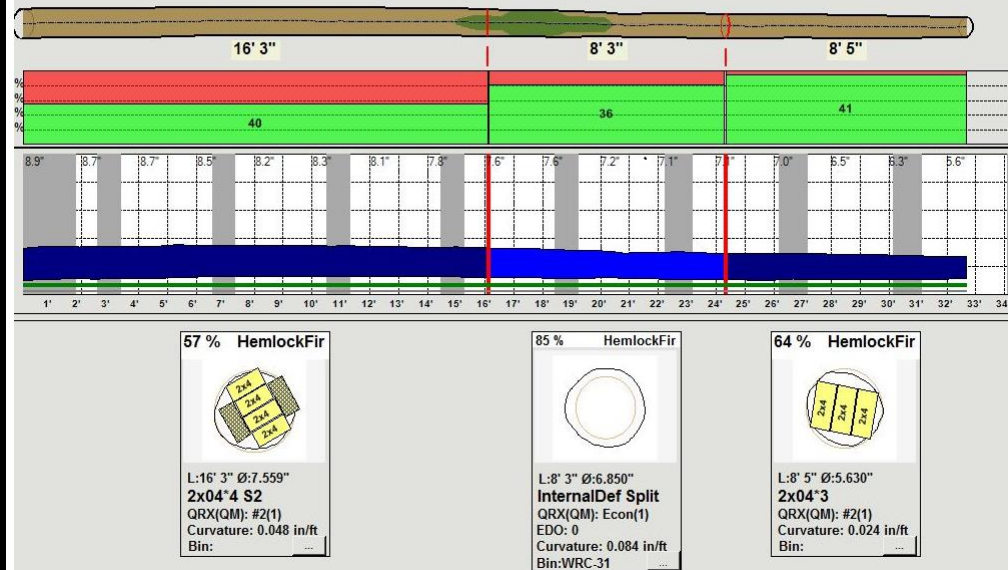
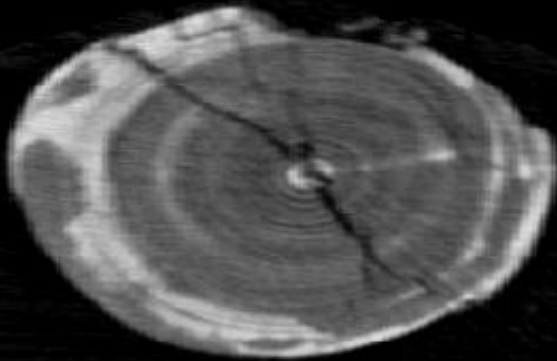
MANUFACTURING COSTS EXCEEDS LUMBER AND RESIDUAL REVENUE



Improved Uptime and reduced operating costs.



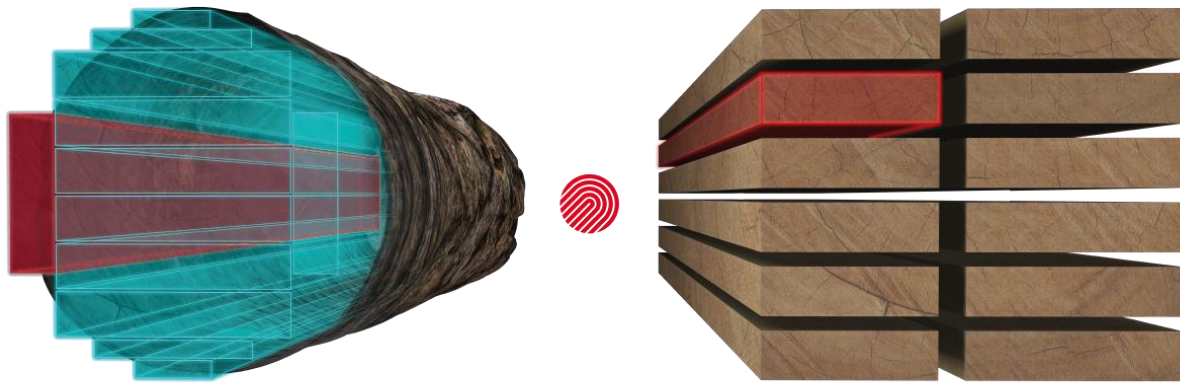
Fall break- Production cost > Wood revenue



NEXT PHASE:

MiCROTEC

MiCROTEC **C**onnect



FINGERPRINT SOLUTION:
FROM LOG TO FINAL
PRODUCT



IDAHO FOREST
G R O U P

Denny, Jones

208-717-8404 | djones@ifg.com

280 Sycamore Dr, Lewiston, ID 83501

www.ifg.com