



**MyFieldTracker**  
Frontline Forestry Management Solutions

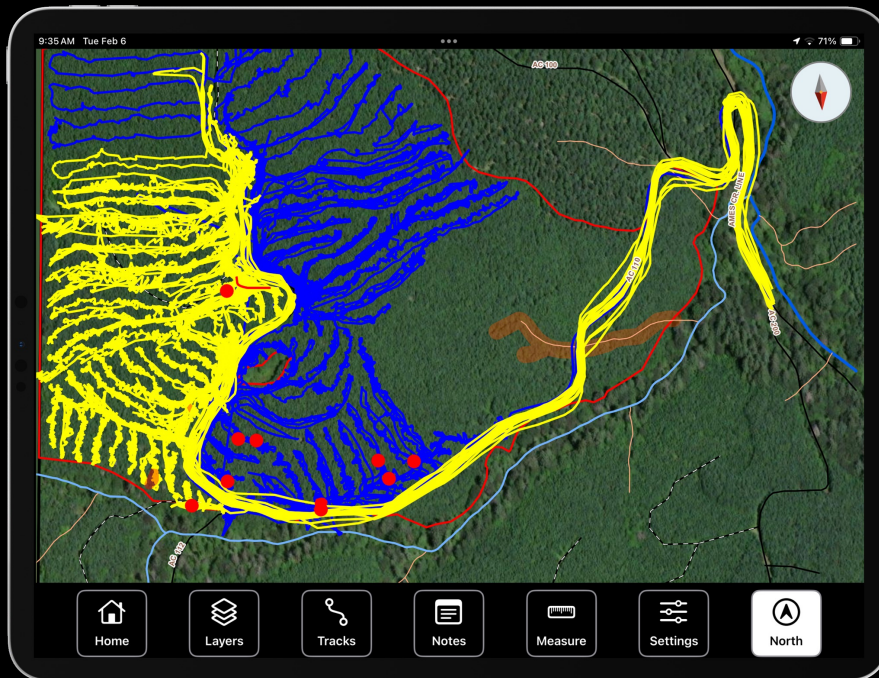
{ Next Generation Frontline Management  
for Timber Harvesting }

# GeoFenced Real-Time Boundary Alerts



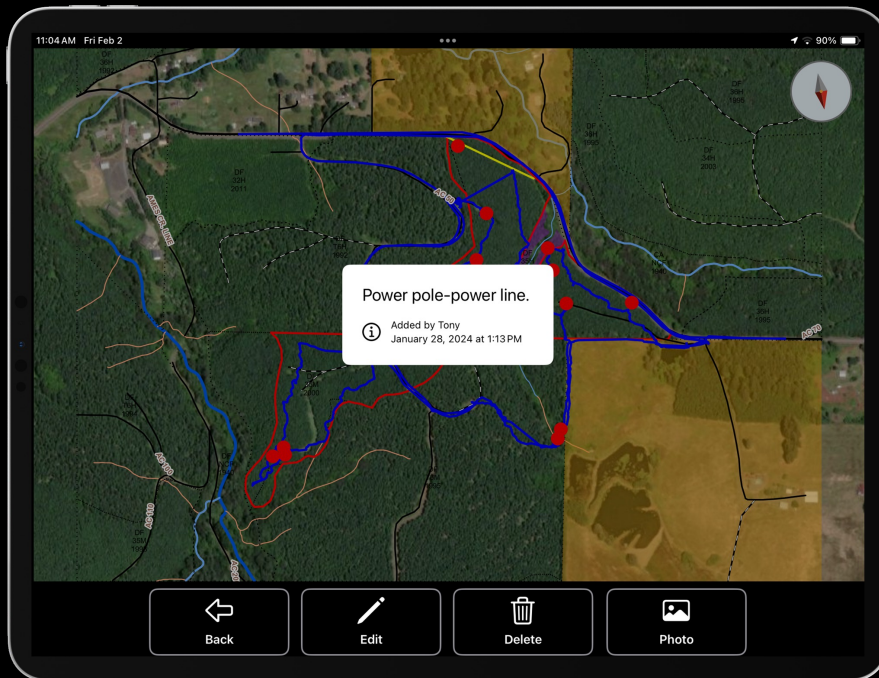
- Real-Time Alerting
- Set Warning Boundary distances
- Set Alert Boundary distances
- Optional Audio Alerting
- Set alerts for ELZ, RELZ, Fish Streams, Property Boundaries, etc.

# Machine Tracking and Data Sharing



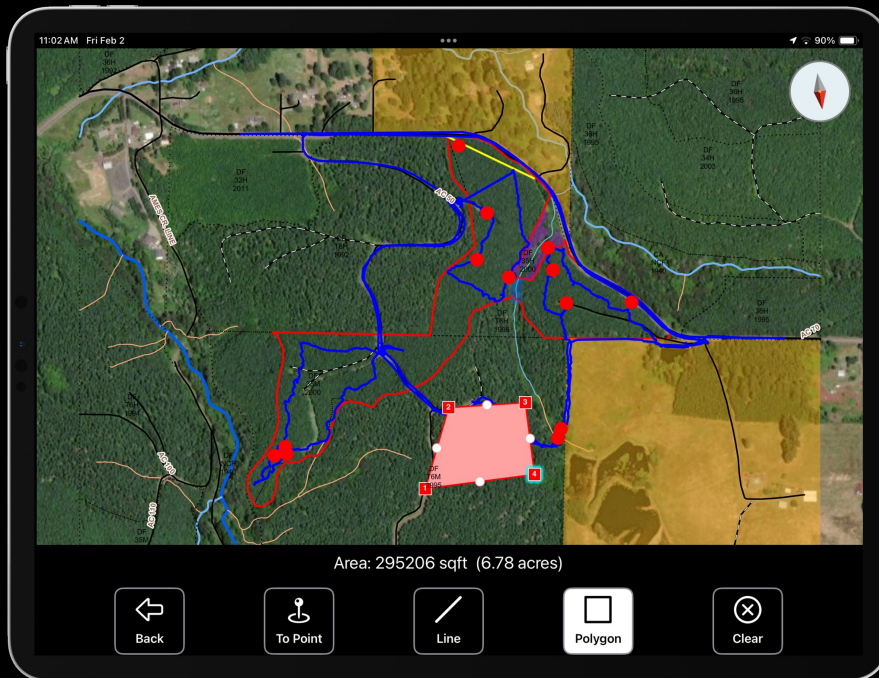
- Track all machine movement
- Specify machine type for easy identification
- Enable/Disable tracks/tracking
- Export tracks in KML format

# Notes and Area of Interest Marking



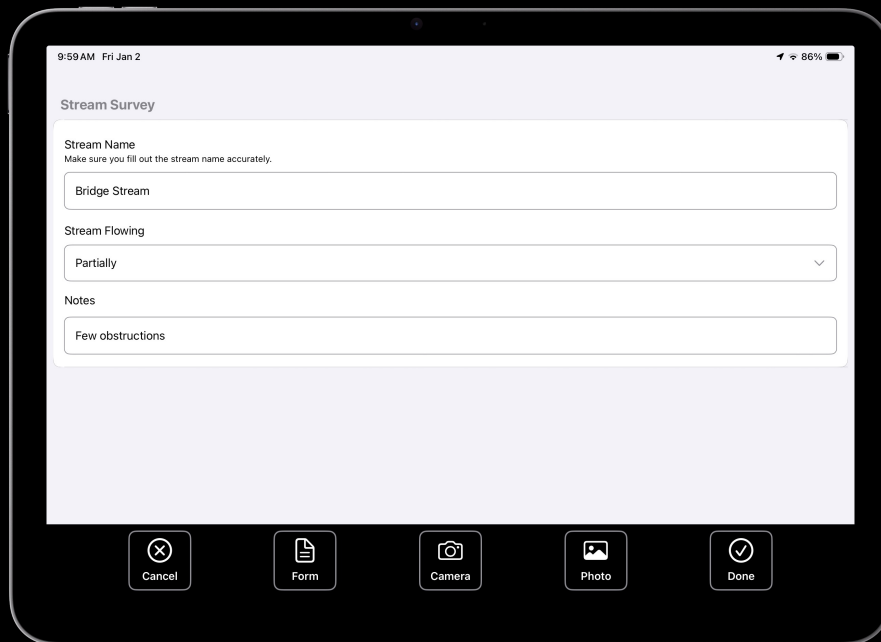
- Unlimited notes
- Attach photos to notes
- Share notes between operators
- Export notes in KML format

# Area and Distance Measuring



- Measure distances, areas, etc.
- Quick and accurate measurement
- No need for other tools like Avenza to measure

# Survey Collection



The screenshot shows a mobile application interface for a 'Stream Survey'. At the top, the status bar displays '9:59AM Fri Jan 2' and '86%' battery. The form is titled 'Stream Survey' and contains the following fields:

- Stream Name:** A text input field with the value 'Bridge Stream'. Below the field is the instruction: 'Make sure you fill out the stream name accurately.'
- Stream Flowing:** A dropdown menu with the selected value 'Partially'.
- Notes:** A text input field with the value 'Few obstructions'.

At the bottom of the screen, there is a navigation bar with five icons: 'Cancel' (a circle with an 'X'), 'Form' (a document icon), 'Camera' (a camera icon), 'Photo' (a photo icon), and 'Done' (a checkmark icon).

- Custom surveys for streams, culverts, etc.
- Unlimited number of forms and surveys
- Export Surveys for import into ArcGIS

# Electronic Load Ticketing

9:36 AM Fri Jan 2 90%

**Ticket Information**

**Ticket Number**  
1017

**Map Name**  
Skrepetos Property

**Mill**  
Mill 1

**Trucker**  
Please make sure you select the correct trucker!  
Trucker 1

**Log Count**  
1

Cancel Print

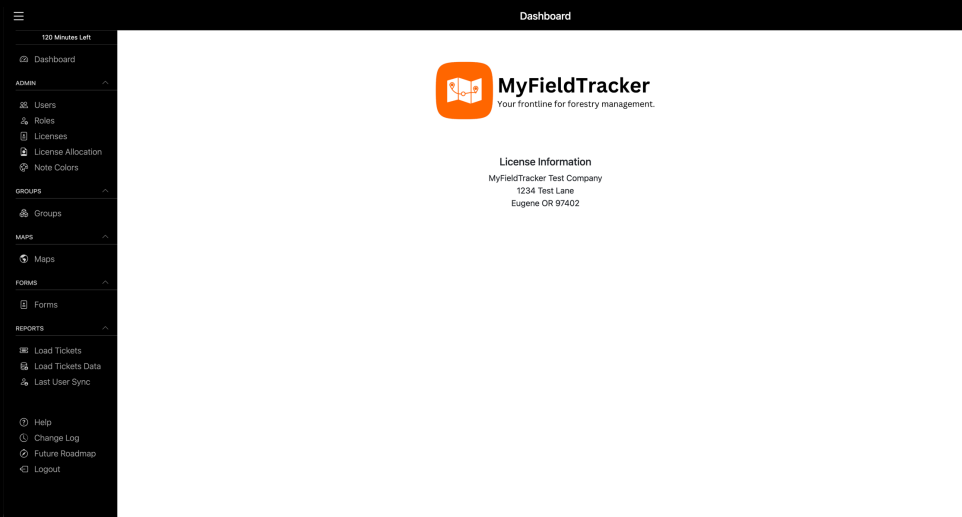
- Full electronic load ticketing
- Design custom load tickets
- Include barcodes and QR codes
- Export load tickets to CSV/Excel

# Phone and Tablet Support



- Apple and Android Support
- No internet connection required in the field
- Real-Time Syncing when WiFi available including Starlink
- Automatic Updates

# Web Based Management Portal



- Easy management of users, maps and load tickets
- Unlimited officer users, maps and forms
- View data in real-time and generate exportable reports

# Company Information



**MyFieldTracker**

Frontline Forestry Management Solutions

Who is using MyFieldTracker?



**STARKER  
FORESTS, INC.**

- Based in entirely in Oregon
- All software development done in Oregon
- Customization available at no extra charge
- Suggestions from each company help make the product better!

# More Information



Scan the QR Code! Free Trial Available!

[www.MyFieldTracker.com](http://www.MyFieldTracker.com)